



3

2

12

1

13

8

10

9

7

11

5

6

Der ¹⁴ futter ⁴ gestalt mag wol verderbenn
Gemeinlich gemiet wirt nymer sterben



15



Das ist des mannes schulter geyt verbiß

Wie wir mannes hant erbei sein leben ha

nicht ist man nicht den hat er mit

Man er nicht hat er nicht den

Man er nicht hat er nicht den

16



19



17



18



mRFA -Ergebnisse

XL3t-69288

Reading No 1
Mode Mining
Time 2018-11-19 12:35
Duration 121.00
Units ppm
Sigma Value 2
Sequence Final
Flags
INV NR Z875
OBJEKT TAFELEMAELDE
MATERIAL HLZ METALL FASSUNG
ANALYSESTELLE P1 GOLDGRUND
MESSAUFBAU STATIV
FILTER m30lo30hi30li30
User Login Raquet



	ppm	+/-	Error
Ce	-339.000	+/-	119.609
La	1.000	+/-	54.934
Ba	228.896	+/-	62.983
Sb	1.000	+/-	23.857
Sn	84.872	+/-	12.969
Cd	16.195	+/-	8.068
Ag	6.085	+/-	5.170
Bal	887039.500	+/-	952.284
Nb	63.001	+/-	21.646
Zr	1.000	+/-	74.950
Y	1.000	+/-	18.350
Sr	268.177	+/-	10.933
Rb	1.000	+/-	54.919
Th	1.000	+/-	1013.407
Bi	1.000	+/-	1170.061
Au	1.000	+/-	37.872
As	7963.543	+/-	210.255
Se	30.433	+/-	21.738
Pb	31708.381	+/-	524.826
Hg	1822.868	+/-	46.151
Zn	1697.923	+/-	52.794
Cu	11344.409	+/-	223.569
Ni	1.000	+/-	34.156
Co	53.744	+/-	30.576
Fe	423.379	+/-	63.151
Mn	132.781	+/-	98.040
Cr	55.637	+/-	36.339
V	1.000	+/-	98.324
Ti	1.000	+/-	513.855
Ca	15627.923	+/-	329.255
K	758.204	+/-	157.842
Al	3428.505	+/-	710.163
P	2605.910	+/-	153.130
Si	7000.936	+/-	401.551
Cl	2385.508	+/-	61.389
S	25253.236	+/-	464.582
Mg	1.000	+/-	6839.400

mRFA -Ergebnisse

XL3t-69288

Reading No 2
Mode Mining
Time 2018-11-19 12:40
Duration 122.01
Units ppm
Sigma Value 2
Sequence Final
Flags
INV NR Z875
OBJEKT TAFELEMAELDE
MATERIAL HLZ METALLL FASSUNG
ANALYSESTELLE P2 GOLDGRUND
MESSAUFBAU STATIV
FILTER m30lo30hi30li30
User Login Raquet



	ppm	+/-	Error
Ce	-339.000	+/-	135.869
La	1.000	+/-	62.136
Ba	305.347	+/-	72.219
Sb	1.000	+/-	28.709
Sn	107.584	+/-	15.056
Cd	19.040	+/-	9.133
Ag	9.616	+/-	5.987
Bal	882495.938	+/-	1133.243
Nb	75.746	+/-	28.484
Zr	1.000	+/-	93.324
Y	1.000	+/-	24.186
Sr	288.516	+/-	13.391
Rb	1.000	+/-	73.750
Th	1.000	+/-	1280.282
Bi	1.000	+/-	1339.963
Au	1.000	+/-	47.023
As	10238.031	+/-	269.329
Se	38.169	+/-	27.263
Pb	41589.801	+/-	731.234
Hg	2362.675	+/-	59.855
Zn	1939.234	+/-	61.083
Cu	13293.937	+/-	262.737
Ni	1.000	+/-	38.780
Co	87.520	+/-	34.597
Fe	377.329	+/-	68.088
Mn	184.752	+/-	110.530
Cr	1.000	+/-	57.678
V	1.000	+/-	125.318
Ti	1.000	+/-	597.004
Ca	8736.110	+/-	228.448
K	543.213	+/-	155.806
Al	2077.277	+/-	620.424
P	2641.709	+/-	143.639
Si	6186.859	+/-	360.305
Cl	2063.198	+/-	55.465
S	24338.326	+/-	466.354
Mg	1.000	+/-	6376.072

mRFA -Ergebnisse

XL3t-69288

Reading No 3
Mode Mining
Time 2018-11-19 12:46
Duration 120.58
Units ppm
Sigma Value 2
Sequence Final
Flags
INV NR Z875
OBJEKT TAFELEMAELDE
MATERIAL HLZ METALLL FASSUNG
ANALYSESTELLE P3 RAHMEN
MESSAUFBAU STATIV
FILTER m30lo30hi30li30
User Login Raquet



	ppm	+/-	Error
Ce	-339.000	+/-	68.907
La	1.000	+/-	31.592
Ba	4415.736	+/-	73.669
Sb	1.000	+/-	12.466
Sn	11.560	+/-	6.286
Cd	13.934	+/-	4.760
Ag	5.481	+/-	3.146
Bal	948023.000	+/-	297.427
Nb	9.320	+/-	2.194
Zr	1.000	+/-	4.978
Y	4.436	+/-	1.596
Sr	579.098	+/-	7.828
Rb	4.736	+/-	2.427
Th	1.000	+/-	69.701
Bi	1.000	+/-	58.173
Au	1.000	+/-	3.383
As	1.000	+/-	8.278
Se	1.000	+/-	1.515
Pb	32.178	+/-	4.582
Hg	1.000	+/-	1.000
Zn	1157.299	+/-	26.941
Cu	5147.079	+/-	67.366
Ni	1.000	+/-	24.086
Co	1.000	+/-	18.258
Fe	194.597	+/-	60.581
Mn	259.319	+/-	194.894
Cr	1.000	+/-	71.559
V	468.877	+/-	274.408
Ti	2286.575	+/-	1388.214
Ca	18272.723	+/-	250.110
K	677.350	+/-	230.436
Al	2257.208	+/-	556.234
P	1.000	+/-	96.048
Si	6597.041	+/-	365.617
Cl	1322.945	+/-	38.156
S	8259.450	+/-	112.417
Mg	1.000	+/-	5607.614

mRFA -Ergebnisse

XL3t-69288

Reading No 4
Mode Mining
Time 2018-11-19 12:51
Duration 121.75
Units ppm
Sigma Value 2
Sequence Final
Flags
INV NR Z875
OBJEKT TAFELEMAELDE
MATERIAL HLZ METALL FASSUNG
ANALYSESTELLE P4 SCHRIFTGRUND
MESSAUFBAU STATIV
FILTER m30lo30hi30li30
User Login Raquet



	ppm	+/-	Error
Ce	-339.000	+/-	70.283
La	1.000	+/-	32.325
Ba	1.000	+/-	35.110
Sb	1.000	+/-	16.206
Sn	13.502	+/-	6.925
Cd	24.412	+/-	5.558
Ag	5.991	+/-	3.416
Bal	748478.063	+/-	1148.820
Nb	8.926	+/-	2.445
Zr	1.000	+/-	6.641
Y	1.000	+/-	1.354
Sr	429.634	+/-	6.587
Rb	3.390	+/-	3.076
Th	1.000	+/-	97.313
Bi	1.000	+/-	93.455
Au	1.000	+/-	3.748
As	145.310	+/-	15.371
Se	1.000	+/-	2.142
Pb	470.818	+/-	13.009
Hg	1.000	+/-	1.530
Zn	466.165	+/-	16.798
Cu	33.786	+/-	11.943
Ni	1.000	+/-	20.993
Co	1.000	+/-	21.598
Fe	1360.344	+/-	61.441
Mn	1.000	+/-	55.174
Cr	65.306	+/-	22.260
V	1.000	+/-	55.217
Ti	481.696	+/-	239.795
Ca	154171.359	+/-	886.893
K	1992.761	+/-	143.860
Al	4114.582	+/-	1314.939
P	1.000	+/-	244.031
Si	20125.811	+/-	767.391
Cl	659.829	+/-	41.703
S	66948.336	+/-	437.248
Mg	1.000	+/-	13954.880

mRFA -Ergebnisse

XL3t-69288

Reading No 5
Mode Mining
Time 2018-11-19 12:55
Duration 121.46
Units ppm
Sigma Value 2
Sequence Final
Flags 3mm
INV NR Z875
OBJEKT TAFELEMAELDE
MATERIAL HLZ METALL FASSUNG
ANALYSESTELLE P5 KRAGEN
MESSAUFBAU STATIV
FILTER m30lo30hi30li30
User Login Raquet



	ppm	+/-	Error
Ce	1.000	+/-	95.764
La	1.000	+/-	80.015
Ba	1.000	+/-	84.540
Sb	81.616	+/-	33.686
Sn	1.000	+/-	18.318
Cd	20.014	+/-	12.626
Ag	1.000	+/-	6.604
Bal	858463.438	+/-	1364.072
Nb	1.000	+/-	9.348
Zr	1.000	+/-	21.149
Y	1.000	+/-	4.937
Sr	315.857	+/-	11.130
Rb	1.000	+/-	8.921
Th	1.000	+/-	297.537
Bi	1.000	+/-	292.411
Au	1.000	+/-	10.912
As	665.906	+/-	52.796
Se	1.000	+/-	8.120
Pb	1792.938	+/-	53.364
Hg	1.000	+/-	6.057
Zn	5699.892	+/-	131.154
Cu	51.421	+/-	22.378
Ni	1.000	+/-	36.649
Co	1.000	+/-	74.751
Fe	7293.803	+/-	256.523
Mn	1.000	+/-	103.155
Cr	87.010	+/-	32.472
V	1.000	+/-	46.841
Ti	249.304	+/-	182.929
Ca	86544.008	+/-	1105.986
K	1186.246	+/-	177.447
Al	1844.911	+/-	794.641
P	1.000	+/-	215.040
Si	9851.678	+/-	571.158
Cl	1917.878	+/-	66.891
S	23934.074	+/-	330.178
Mg	1.000	+/-	8423.145

mRFA -Ergebnisse

XL3t-69288

Reading No 6
Mode Mining
Time 2018-11-19 12:59
Duration 120.19
Units ppm
Sigma Value 2
Sequence Final
Flags 3mm
INV NR Z875
OBJEKT TAFELEMAELDE
MATERIAL HLZ METALL FASSUNG
ANALYSESTELLE P6 KRAGEN
MESSAUFBAU STATIV
FILTER m30lo30hi30li30
User Login Raquet

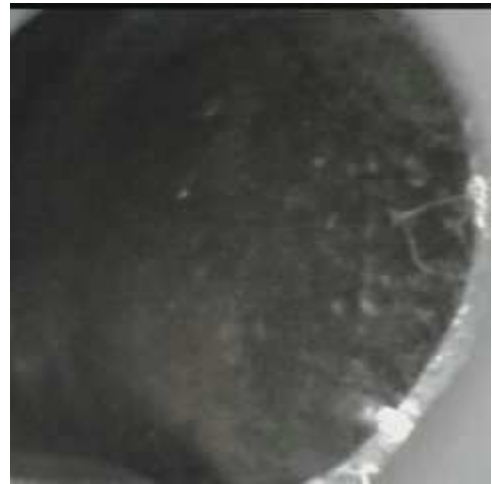


	ppm	+/-	Error
Ce	1.000	+/-	121.864
La	1.000	+/-	100.122
Ba	1899.428	+/-	148.797
Sb	1.000	+/-	56.792
Sn	1.000	+/-	34.803
Cd	18.712	+/-	14.865
Ag	1.000	+/-	7.510
Bal	864953.750	+/-	1438.340
Nb	21.621	+/-	17.137
Zr	1.000	+/-	60.894
Y	1.000	+/-	14.856
Sr	448.866	+/-	16.123
Rb	1.000	+/-	30.977
Th	1.000	+/-	847.358
Bi	1.000	+/-	737.327
Au	1.000	+/-	24.090
As	2804.231	+/-	150.519
Se	1.000	+/-	17.686
Pb	14189.579	+/-	298.226
Hg	1.000	+/-	13.946
Zn	1829.872	+/-	73.723
Cu	99.654	+/-	26.772
Ni	1.000	+/-	41.684
Co	1.000	+/-	82.406
Fe	7377.925	+/-	298.701
Mn	995.745	+/-	259.102
Cr	1.000	+/-	104.765
V	1.000	+/-	385.851
Ti	1110.748	+/-	1074.190
Ca	51856.707	+/-	1018.292
K	1524.589	+/-	253.180
Al	4993.306	+/-	953.876
P	589.538	+/-	179.000
Si	13271.397	+/-	689.018
Cl	2747.802	+/-	91.821
S	29266.574	+/-	577.665
Mg	1.000	+/-	7835.609

mRFA -Ergebnisse

XL3t-69288

Reading No 7
Mode Mining
Time 2018-11-19 13:04
Duration 120.61
Units ppm
Sigma Value 2
Sequence Final
Flags
INV NR Z875
OBJEKT TAFELEMAELDE
MATERIAL HLZ METALL FASSUNG
ANALYSESTELLE P7 HALS
MESSAUFBAU STATIV
FILTER m30lo30hi30li30
User Login Raquet

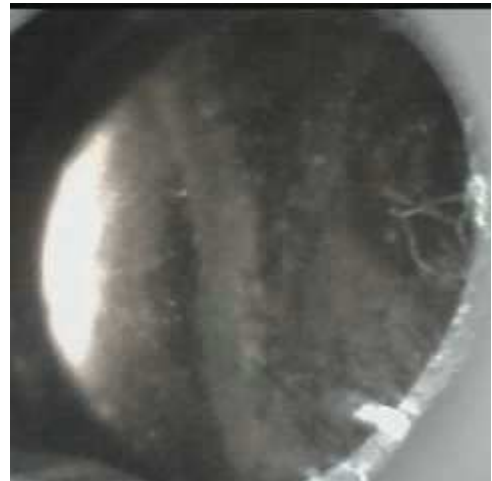


	ppm	+/-	Error
Ce	-339.000	+/-	72.573
La	1.000	+/-	33.294
Ba	370.312	+/-	40.617
Sb	29.799	+/-	13.598
Sn	8.121	+/-	6.811
Cd	62.882	+/-	6.489
Ag	5.985	+/-	3.411
Bal	866035.938	+/-	723.044
Nb	10.292	+/-	5.775
Zr	1.000	+/-	20.691
Y	1.000	+/-	4.551
Sr	343.642	+/-	6.553
Rb	1.000	+/-	10.661
Th	1.000	+/-	305.680
Bi	1.000	+/-	286.480
Au	1.000	+/-	8.684
As	1885.667	+/-	56.326
Se	1.000	+/-	6.158
Pb	5517.536	+/-	66.232
Hg	1.000	+/-	4.595
Zn	2308.634	+/-	42.855
Cu	139.848	+/-	15.422
Ni	1.000	+/-	23.712
Co	1.000	+/-	39.847
Fe	7612.991	+/-	148.979
Mn	345.632	+/-	107.559
Cr	74.486	+/-	40.606
V	1.000	+/-	225.444
Ti	1025.988	+/-	694.603
Ca	53148.520	+/-	551.208
K	1731.079	+/-	169.308
Al	4444.975	+/-	833.917
P	1878.304	+/-	172.016
Si	19655.125	+/-	652.355
Cl	1911.254	+/-	47.865
S	31453.008	+/-	335.505
Mg	1.000	+/-	8154.532

mRFA -Ergebnisse

XL3t-69288

Reading No 8
Mode Mining
Time 2018-11-19 13:10
Duration 121.96
Units ppm
Sigma Value 2
Sequence Final
Flags
INV NR Z875
OBJEKT TAFELEMAELDE
MATERIAL HLZ METALL FASSUNG
ANALYSESTELLE P8 OHR
MESSAUFBAU STATIV
FILTER m30lo30hi30li30
User Login Raquet



	ppm	+/-	Error
Ce	-339.000	+/-	82.927
La	1.000	+/-	37.832
Ba	719.433	+/-	48.959
Sb	1.000	+/-	24.418
Sn	1.000	+/-	8.234
Cd	98.265	+/-	7.999
Ag	5.073	+/-	3.787
Bal	864873.750	+/-	749.747
Nb	14.572	+/-	7.033
Zr	1.000	+/-	25.263
Y	1.000	+/-	5.708
Sr	352.314	+/-	7.009
Rb	1.000	+/-	12.745
Th	1.000	+/-	371.400
Bi	1.000	+/-	365.975
Au	1.000	+/-	9.906
As	2393.126	+/-	69.221
Se	1.000	+/-	9.634
Pb	7898.678	+/-	95.117
Hg	1.000	+/-	5.175
Zn	1292.179	+/-	31.611
Cu	209.816	+/-	17.694
Ni	1.000	+/-	24.404
Co	1.000	+/-	35.793
Fe	5303.832	+/-	129.601
Mn	277.996	+/-	121.507
Cr	68.560	+/-	42.057
V	156.112	+/-	144.707
Ti	1078.581	+/-	735.503
Ca	54632.945	+/-	602.635
K	1498.917	+/-	166.654
Al	5213.820	+/-	907.919
P	971.607	+/-	176.284
Si	16336.011	+/-	624.026
Cl	1691.278	+/-	48.095
S	34913.105	+/-	398.180
Mg	1.000	+/-	9441.283

mRFA -Ergebnisse

XL3t-69288

Reading No 9
Mode Mining
Time 2018-11-19 13:14
Duration 122.00
Units ppm
Sigma Value 2
Sequence Final
Flags
INV NR Z875
OBJEKT TAFELEMAELDE
MATERIAL HLZ METALL FASSUNG
ANALYSESTELLE P9 WANGE
MESSAUFBAU STATIV
FILTER m30lo30hi30li30
User Login Raquet

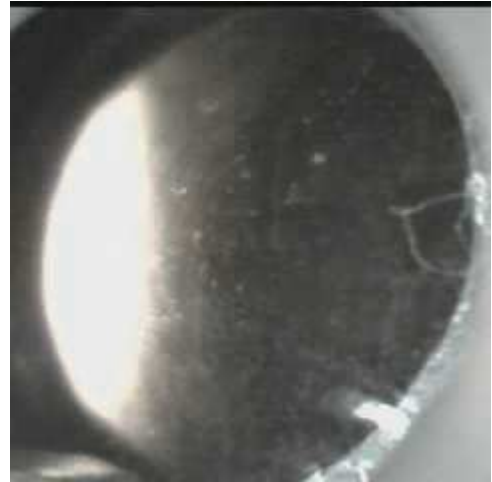


	ppm	+/-	Error
Ce	-339.000	+/-	112.954
La	1.000	+/-	51.749
Ba	3790.043	+/-	99.697
Sb	1.000	+/-	19.770
Sn	1.000	+/-	9.849
Cd	428.008	+/-	16.778
Ag	1.000	+/-	6.029
Bal	892947.688	+/-	824.173
Nb	32.985	+/-	17.141
Zr	1.000	+/-	58.505
Y	1.000	+/-	14.423
Sr	414.343	+/-	10.975
Rb	1.000	+/-	29.786
Th	1.000	+/-	826.539
Bi	1.000	+/-	783.024
Au	1.000	+/-	20.349
As	5960.024	+/-	161.313
Se	1.000	+/-	16.342
Pb	24243.016	+/-	366.724
Hg	1.000	+/-	11.019
Zn	764.359	+/-	29.355
Cu	34.609	+/-	16.846
Ni	1.000	+/-	33.803
Co	1.000	+/-	30.365
Fe	882.892	+/-	87.911
Mn	355.843	+/-	209.094
Cr	1.000	+/-	61.970
V	412.010	+/-	225.535
Ti	1989.972	+/-	1144.720
Ca	3515.641	+/-	130.215
K	1347.060	+/-	229.640
Al	2670.457	+/-	695.234
P	1481.161	+/-	161.122
Si	11205.619	+/-	494.681
Cl	1675.848	+/-	50.076
S	36088.625	+/-	631.153
Mg	9759.726	+/-	7700.238

mRFA -Ergebnisse

XL3t-69288

Reading No 10
Mode Mining
Time 2018-11-19 13:19
Duration 120.88
Units ppm
Sigma Value 2
Sequence Final
Flags
INV NR Z875
OBJEKT TAFELEMAELDE
MATERIAL HLZ METALL FASSUNG
ANALYSESTELLE P10 SCHLAEFE
MESSAUFBAU STATIV
FILTER m30lo30hi30li30
User Login Raquet

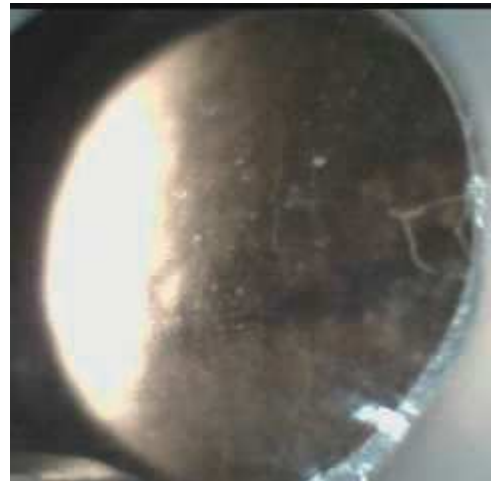


	ppm	+/-	Error
Ce	-339.000	+/-	68.667
La	1.000	+/-	31.262
Ba	1.000	+/-	34.205
Sb	29.289	+/-	12.800
Sn	19.480	+/-	6.779
Cd	18.591	+/-	5.124
Ag	6.863	+/-	3.296
Bal	841400.125	+/-	776.450
Nb	5.031	+/-	3.021
Zr	1.000	+/-	9.620
Y	1.000	+/-	1.986
Sr	244.043	+/-	4.812
Rb	1.000	+/-	5.350
Th	1.000	+/-	144.386
Bi	1.000	+/-	128.086
Au	1.000	+/-	4.734
As	560.753	+/-	25.528
Se	1.000	+/-	2.966
Pb	1254.942	+/-	21.737
Hg	1.000	+/-	2.321
Zn	2737.910	+/-	41.856
Cu	138.121	+/-	14.376
Ni	1.000	+/-	20.962
Co	1.000	+/-	46.057
Fe	12689.285	+/-	171.864
Mn	1643.913	+/-	89.243
Cr	79.057	+/-	25.652
V	62.680	+/-	54.168
Ti	484.771	+/-	278.829
Ca	77635.898	+/-	565.517
K	2379.014	+/-	153.740
Al	5936.112	+/-	852.996
P	1285.132	+/-	142.672
Si	28717.967	+/-	709.052
Cl	1666.079	+/-	40.771
S	21004.922	+/-	190.534
Mg	1.000	+/-	7437.858

mRFA -Ergebnisse

XL3t-69288

Reading No 11
Mode Mining
Time 2018-11-19 13:23
Duration 121.13
Units ppm
Sigma Value 2
Sequence Final
Flags
INV NR Z875
OBJEKT TAFELEMAELDE
MATERIAL HLZ METALL FASSUNG
ANALYSESTELLE P11 LIPPEN
MESSAUFBAU STATIV
FILTER m30lo30hi30li30
User Login Raquet



	ppm	+/-	Error
Ce	-339.000	+/-	77.633
La	1.000	+/-	36.144
Ba	400.136	+/-	44.651
Sb	1.000	+/-	13.759
Sn	9.328	+/-	7.466
Cd	104.923	+/-	8.264
Ag	7.663	+/-	3.830
Bal	838606.938	+/-	869.632
Nb	14.620	+/-	6.089
Zr	1.000	+/-	21.782
Y	1.000	+/-	4.874
Sr	299.483	+/-	6.180
Rb	1.000	+/-	11.787
Th	1.000	+/-	321.532
Bi	1.000	+/-	301.350
Au	1.000	+/-	8.348
As	1825.813	+/-	58.525
Se	1.000	+/-	6.208
Pb	5921.450	+/-	71.602
Hg	1.000	+/-	4.444
Zn	864.532	+/-	24.810
Cu	138.640	+/-	15.892
Ni	1.000	+/-	23.302
Co	1.000	+/-	33.917
Fe	4773.583	+/-	120.181
Mn	442.832	+/-	113.968
Cr	45.864	+/-	42.470
V	1.000	+/-	205.166
Ti	1510.616	+/-	708.090
Ca	66577.750	+/-	673.697
K	2556.287	+/-	187.999
Al	6669.998	+/-	973.128
P	1081.099	+/-	174.540
Si	29577.873	+/-	781.686
Cl	2174.900	+/-	51.867
S	36395.645	+/-	380.122
Mg	1.000	+/-	8723.519

mRFA -Ergebnisse

XL3t-69288

Reading No 12
Mode Mining
Time 2018-11-19 13:27
Duration 121.82
Units ppm
Sigma Value 2
Sequence Final
Flags
INV NR Z875
OBJEKT TAFELEMAELDE
MATERIAL HLZ METALL FASSUNG
ANALYSESTELLE P12 HUT
MESSAUFBAU STATIV
FILTER m30lo30hi30li30
User Login Raquet

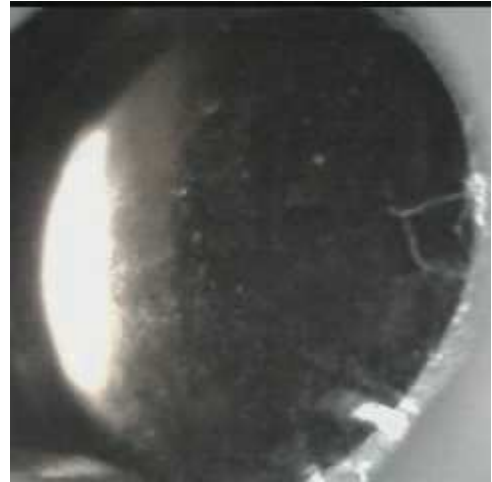


	ppm	+/-	Error
Ce	-339.000	+/-	73.105
La	1.000	+/-	33.710
Ba	1.000	+/-	36.769
Sb	72.905	+/-	14.339
Sn	9.070	+/-	6.986
Cd	11.699	+/-	5.247
Ag	5.849	+/-	3.458
Bal	864918.438	+/-	697.374
Nb	6.660	+/-	4.002
Zr	1.000	+/-	13.782
Y	1.000	+/-	2.939
Sr	332.155	+/-	6.027
Rb	1.000	+/-	8.135
Th	1.000	+/-	205.122
Bi	1.000	+/-	188.203
Au	1.000	+/-	5.974
As	868.224	+/-	36.766
Se	1.000	+/-	4.165
Pb	2593.175	+/-	35.599
Hg	1.000	+/-	2.837
Zn	8798.521	+/-	96.121
Cu	59.396	+/-	12.949
Ni	1.000	+/-	21.312
Co	1.000	+/-	21.811
Fe	1503.375	+/-	63.565
Mn	1.000	+/-	52.889
Cr	76.638	+/-	21.116
V	1.000	+/-	35.758
Ti	440.630	+/-	186.769
Ca	73557.867	+/-	577.613
K	2535.689	+/-	138.458
Al	2618.928	+/-	658.274
P	1396.334	+/-	128.448
Si	19620.340	+/-	562.672
Cl	1479.940	+/-	36.726
S	19094.127	+/-	183.637
Mg	1.000	+/-	6662.455

mRFA -Ergebnisse

XL3t-69288

Reading No 13
Mode Mining
Time 2018-11-19 13:30
Duration 121.48
Units ppm
Sigma Value 2
Sequence Final
Flags
INV NR Z875
OBJEKT TAFELEMAELDE
MATERIAL HLZ METALL FASSUNG
ANALYSESTELLE P13 HUT
MESSAUFBAU STATIV
FILTER m30lo30hi30li30
User Login Raquet



	ppm	+/-	Error
Ce	-339.000	+/-	72.925
La	1.000	+/-	33.545
Ba	1.000	+/-	36.535
Sb	18.634	+/-	13.688
Sn	12.407	+/-	7.170
Cd	24.480	+/-	5.777
Ag	6.461	+/-	3.571
Bal	772283.188	+/-	1110.951
Nb	9.240	+/-	2.771
Zr	1.000	+/-	8.019
Y	1.000	+/-	1.662
Sr	387.235	+/-	6.505
Rb	5.863	+/-	3.686
Th	1.000	+/-	118.150
Bi	1.000	+/-	98.507
Au	1.000	+/-	4.462
As	238.341	+/-	18.950
Se	1.000	+/-	2.586
Pb	636.953	+/-	15.870
Hg	1.000	+/-	1.872
Zn	1661.024	+/-	33.168
Cu	105.758	+/-	14.703
Ni	1.000	+/-	22.105
Co	1.000	+/-	24.349
Fe	2159.926	+/-	76.800
Mn	1.000	+/-	56.626
Cr	94.909	+/-	25.942
V	1.000	+/-	69.453
Ti	889.341	+/-	273.186
Ca	137426.922	+/-	854.671
K	2816.563	+/-	160.381
Al	5542.738	+/-	1223.922
P	707.644	+/-	209.499
Si	31755.641	+/-	887.402
Cl	2158.122	+/-	55.657
S	41058.645	+/-	320.625
Mg	1.000	+/-	11912.298

mRFA -Ergebnisse

XL3t-69288

Reading No 14
Mode Mining
Time 2018-11-19 13:38
Duration 120.18
Units ppm
Sigma Value 2
Sequence Final
Flags
INV NR Z875
OBJEKT TAFELEMAELDE
MATERIAL HLZ METALL FASSUNG
ANALYSESTELLE P14 SCHRIFTGRUND
MESSAUFBAU STATIV
FILTER m30lo30hi30li30
User Login Raquet



	ppm	+/-	Error
Ce	-339.000	+/-	71.350
La	1.000	+/-	32.962
Ba	1.000	+/-	35.514
Sb	1.000	+/-	12.446
Sn	9.704	+/-	7.033
Cd	19.090	+/-	5.563
Ag	9.143	+/-	3.669
Bal	760282.000	+/-	1107.653
Nb	8.805	+/-	2.203
Zr	1.000	+/-	5.062
Y	2.365	+/-	1.648
Sr	277.164	+/-	5.147
Rb	4.433	+/-	2.458
Th	1.000	+/-	74.188
Bi	1.000	+/-	59.385
Au	1.000	+/-	3.483
As	56.748	+/-	9.728
Se	1.000	+/-	1.648
Pb	169.120	+/-	8.009
Hg	1.000	+/-	1.089
Zn	198.627	+/-	11.684
Cu	16.012	+/-	11.542
Ni	1.000	+/-	20.657
Co	1.000	+/-	19.864
Fe	1014.514	+/-	54.921
Mn	1.000	+/-	46.224
Cr	1.000	+/-	33.420
V	1.000	+/-	27.175
Ti	284.799	+/-	141.930
Ca	151783.047	+/-	858.817
K	1275.885	+/-	132.783
Al	2532.556	+/-	1272.947
P	1.000	+/-	246.710
Si	14754.686	+/-	700.297
Cl	509.835	+/-	41.418
S	66791.445	+/-	434.269
Mg	1.000	+/-	13254.955

mRFA -Ergebnisse

XL3t-69288

Reading No 15
Mode Mining
Time 2018-11-19 13:45
Duration 120.07
Units ppm
Sigma Value 2
Sequence Final
Flags
INV NR Z875
OBJEKT TAFELEMAELDE
MATERIAL HLZ METALL FASSUNG
ANALYSESTELLE P15 RS SCHRIFT
MESSAUFBAU STATIV
FILTER m30lo30hi30li30
User Login Raquet

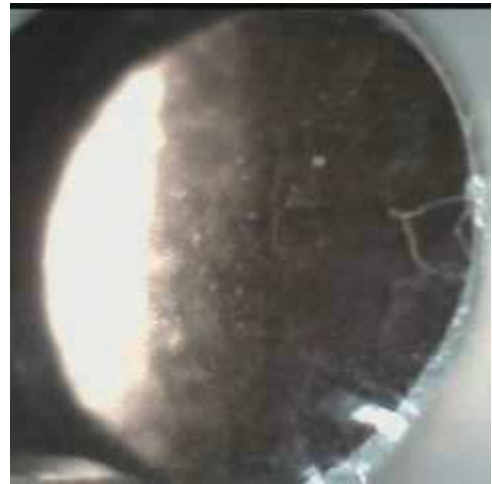


	ppm	+/-	Error
Ce	-339.000	+/-	71.885
La	1.000	+/-	33.151
Ba	1.000	+/-	36.444
Sb	1.000	+/-	12.515
Sn	34.830	+/-	7.758
Cd	20.973	+/-	5.659
Ag	7.158	+/-	3.583
Bal	782616.625	+/-	1043.836
Nb	16.801	+/-	5.032
Zr	18.449	+/-	18.078
Y	19.039	+/-	4.831
Sr	138.754	+/-	4.110
Rb	15.224	+/-	7.889
Th	1.000	+/-	259.756
Bi	1.000	+/-	244.857
Au	1.000	+/-	8.866
As	1.000	+/-	36.800
Se	1.000	+/-	5.211
Pb	3662.655	+/-	46.526
Hg	291.853	+/-	8.791
Zn	78.246	+/-	9.832
Cu	59.213	+/-	13.436
Ni	1.000	+/-	21.972
Co	1.000	+/-	43.460
Fe	9374.921	+/-	162.210
Mn	1.000	+/-	49.413
Cr	36.950	+/-	26.804
V	1.000	+/-	48.963
Ti	297.816	+/-	160.934
Ca	164699.281	+/-	1133.419
K	4263.393	+/-	207.640
Al	3044.565	+/-	1039.794
P	1.000	+/-	116.430
Si	25786.313	+/-	800.624
Cl	1005.813	+/-	41.754
S	4511.016	+/-	90.994
Mg	1.000	+/-	9635.924

mRFA -Ergebnisse

XL3t-69288

Reading No 16
Mode Mining
Time 2018-11-19 13:49
Duration 120.97
Units ppm
Sigma Value 2
Sequence Final
Flags
INV NR Z875
OBJEKT TAFELEMAELDE
MATERIAL HLZ METALL FASSUNG
ANALYSESTELLE P16 RS GRUND
MESSAUFBAU STATIV
FILTER m30lo30hi30li30
User Login Raquet



	ppm	+/-	Error
Ce	-339.000	+/-	64.917
La	1.000	+/-	29.704
Ba	1.000	+/-	32.835
Sb	16.600	+/-	12.241
Sn	25.102	+/-	6.830
Cd	17.977	+/-	5.058
Ag	10.680	+/-	3.429
Bal	844033.063	+/-	728.091
Nb	13.921	+/-	3.615
Zr	14.115	+/-	12.437
Y	23.374	+/-	3.428
Sr	107.281	+/-	3.257
Rb	7.632	+/-	5.355
Th	1.000	+/-	177.268
Bi	1.000	+/-	160.374
Au	1.000	+/-	5.565
As	1.000	+/-	23.046
Se	1.000	+/-	3.593
Pb	1842.868	+/-	26.997
Hg	150.703	+/-	5.499
Zn	46.700	+/-	7.662
Cu	19.304	+/-	10.935
Ni	1.000	+/-	18.875
Co	1.000	+/-	34.704
Fe	6751.368	+/-	123.614
Mn	1.000	+/-	42.316
Cr	27.671	+/-	23.794
V	1.000	+/-	34.158
Ti	161.788	+/-	119.222
Ca	130452.477	+/-	849.016
K	3342.269	+/-	179.689
Al	1.000	+/-	937.744
P	1.000	+/-	87.561
Si	6835.245	+/-	417.093
Cl	1999.208	+/-	45.539
S	4100.583	+/-	77.101
Mg	1.000	+/-	7455.917

mRFA -Ergebnisse

XL3t-69288

Reading No 17
Mode Mining
Time 2018-11-19 13:53
Duration 120.49
Units ppm
Sigma Value 2
Sequence Final
Flags
INV NR Z875
OBJEKT TAFELEMAELDE
MATERIAL HLZ METALL FASSUNG
ANALYSESTELLE P17 RS GRUND
MESSAUFBAU STATIV
FILTER m30lo30hi30li30
User Login Raquet



	ppm	+/-	Error
Ce	-339.000	+/-	65.419
La	1.000	+/-	30.173
Ba	1.000	+/-	32.732
Sb	1.000	+/-	16.164
Sn	10.386	+/-	6.561
Cd	15.498	+/-	5.105
Ag	6.746	+/-	3.334
Bal	912585.313	+/-	470.082
Nb	18.961	+/-	2.287
Zr	14.392	+/-	5.153
Y	9.105	+/-	1.698
Sr	123.932	+/-	3.421
Rb	8.268	+/-	2.385
Th	1.000	+/-	67.946
Bi	1.000	+/-	66.176
Au	1.000	+/-	3.178
As	9.308	+/-	6.878
Se	1.000	+/-	1.612
Pb	77.867	+/-	5.859
Hg	1.826	+/-	1.649
Zn	32.118	+/-	7.000
Cu	20.851	+/-	11.964
Ni	1.000	+/-	21.161
Co	1.000	+/-	19.565
Fe	1094.047	+/-	57.606
Mn	1.000	+/-	44.243
Cr	1.000	+/-	26.839
V	1.000	+/-	19.481
Ti	1.000	+/-	166.248
Ca	73278.438	+/-	529.807
K	3204.676	+/-	169.472
Al	699.840	+/-	662.379
P	366.221	+/-	98.713
Si	5847.679	+/-	410.094
Cl	641.865	+/-	36.532
S	1932.670	+/-	56.643
Mg	1.000	+/-	12187.186

mRFA -Ergebnisse

XL3t-69288

Reading No 18
Mode Mining
Time 2018-11-19 13:59
Duration 121.51
Units ppm
Sigma Value 2
Sequence Final
Flags
INV NR Z875
OBJEKT TAFELEMAELDE
MATERIAL HLZ METALL FASSUNG
ANALYSESTELLE P18 RS HOPFENDOLDE
MESSAUFBAU STATIV
FILTER m30lo30hi30li30
User Login Raquet



	ppm	+/-	Error
Ce	-339.000	+/-	53.633
La	1.000	+/-	24.645
Ba	1.000	+/-	26.713
Sb	11.141	+/-	10.124
Sn	8.882	+/-	5.318
Cd	18.872	+/-	4.249
Ag	8.033	+/-	2.767
Bal	835503.938	+/-	712.872
Nb	15.294	+/-	2.030
Zr	12.900	+/-	4.943
Y	7.693	+/-	1.536
Sr	63.087	+/-	2.207
Rb	5.437	+/-	2.197
Th	1.000	+/-	66.659
Bi	1.000	+/-	54.724
Au	1.000	+/-	2.612
As	1.000	+/-	6.914
Se	1.000	+/-	1.371
Pb	151.474	+/-	6.728
Hg	1.930	+/-	1.411
Zn	51.051	+/-	6.548
Cu	1.000	+/-	10.736
Ni	1.000	+/-	17.001
Co	1.000	+/-	17.183
Fe	1165.712	+/-	50.884
Mn	1.000	+/-	38.393
Cr	1.000	+/-	20.709
V	1.000	+/-	19.307
Ti	162.998	+/-	95.551
Ca	137055.188	+/-	724.974
K	2028.073	+/-	145.446
Al	1086.611	+/-	714.286
P	1.000	+/-	76.753
Si	7139.139	+/-	407.923
Cl	874.164	+/-	32.399
S	2030.854	+/-	53.344
Mg	12597.565	+/-	7631.282

mRFA -Ergebnisse

XL3t-69288

Reading No 19
Mode Mining
Time 2018-11-19 14:04
Duration 121.07
Units ppm
Sigma Value 2
Sequence Final
Flags
INV NR Z875
OBJEKT TAFELEMAELDE
MATERIAL HLZ METALL FASSUNG
ANALYSESTELLE P19 RS SCHRIFT
MESSAUFBAU STATIV
FILTER m30lo30hi30li30
User Login Raquet



	ppm	+/-	Error
Ce	-339.000	+/-	55.975
La	1.000	+/-	25.640
Ba	1.000	+/-	27.777
Sb	25.048	+/-	10.713
Sn	7.355	+/-	5.465
Cd	13.857	+/-	4.250
Ag	5.030	+/-	2.734
Bal	832713.000	+/-	731.190
Nb	15.257	+/-	2.225
Zr	12.674	+/-	6.047
Y	8.915	+/-	1.791
Sr	81.324	+/-	2.514
Rb	5.089	+/-	2.645
Th	1.000	+/-	83.263
Bi	1.000	+/-	76.884
Au	1.000	+/-	3.115
As	16.599	+/-	10.984
Se	1.000	+/-	1.635
Pb	338.839	+/-	9.901
Hg	2.674	+/-	1.718
Zn	87.369	+/-	7.745
Cu	16.855	+/-	9.698
Ni	1.000	+/-	17.466
Co	1.000	+/-	27.620
Fe	4727.964	+/-	93.908
Mn	1.000	+/-	38.463
Cr	1.000	+/-	27.774
V	22.539	+/-	22.110
Ti	248.388	+/-	117.358
Ca	131568.484	+/-	726.695
K	3663.641	+/-	172.845
Al	1446.616	+/-	721.300
P	1.000	+/-	88.627
Si	10289.646	+/-	466.769
Cl	1399.382	+/-	37.459
S	3364.761	+/-	66.704
Mg	9918.715	+/-	7552.896