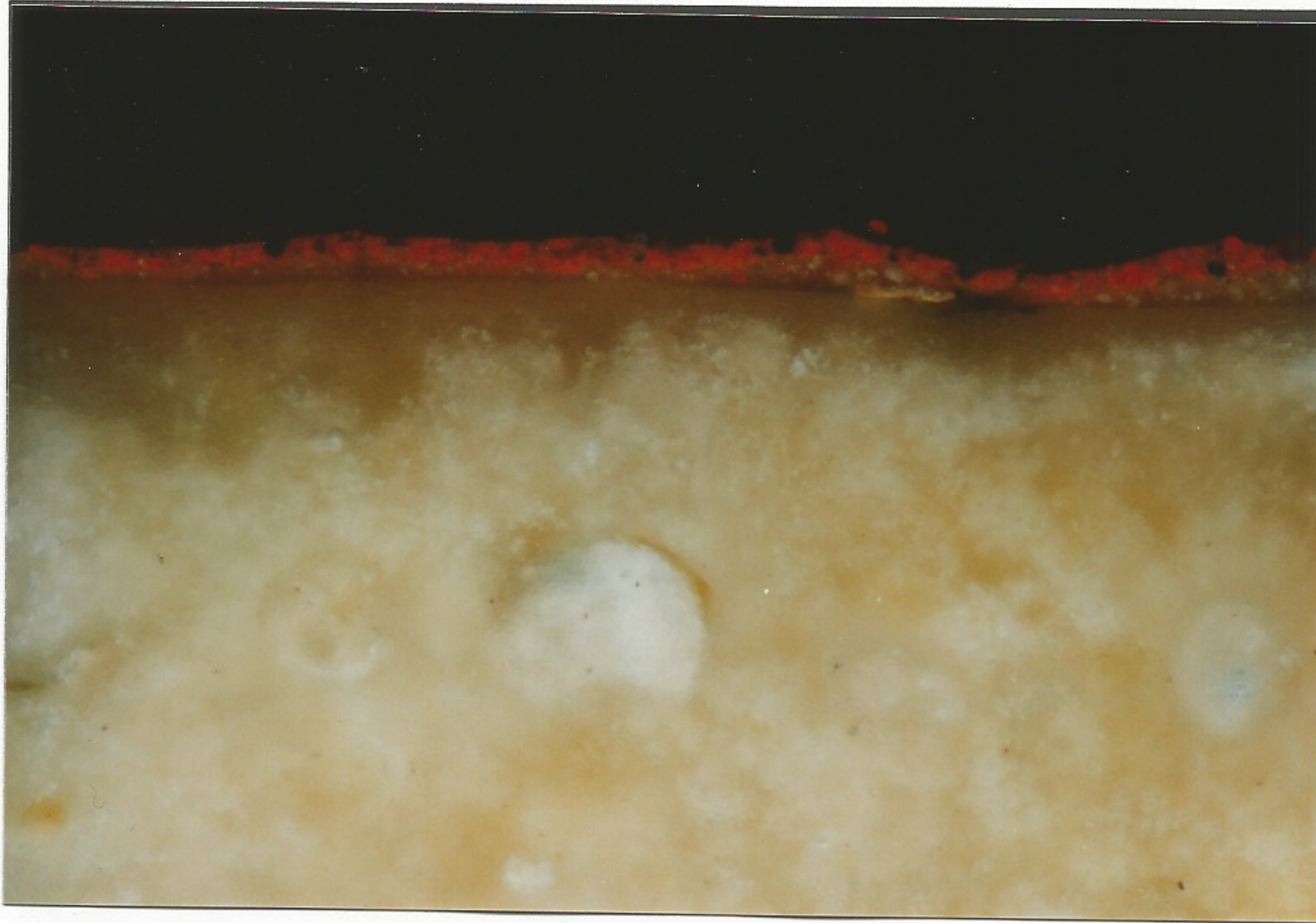


Lucas Cranach d.Ä.:
Altar Georg des Bärtigen (Barbaratafel) ; Dom zu Meissen
Diplomarbeit Petra Barkowsky, HfBK Dresden 1980

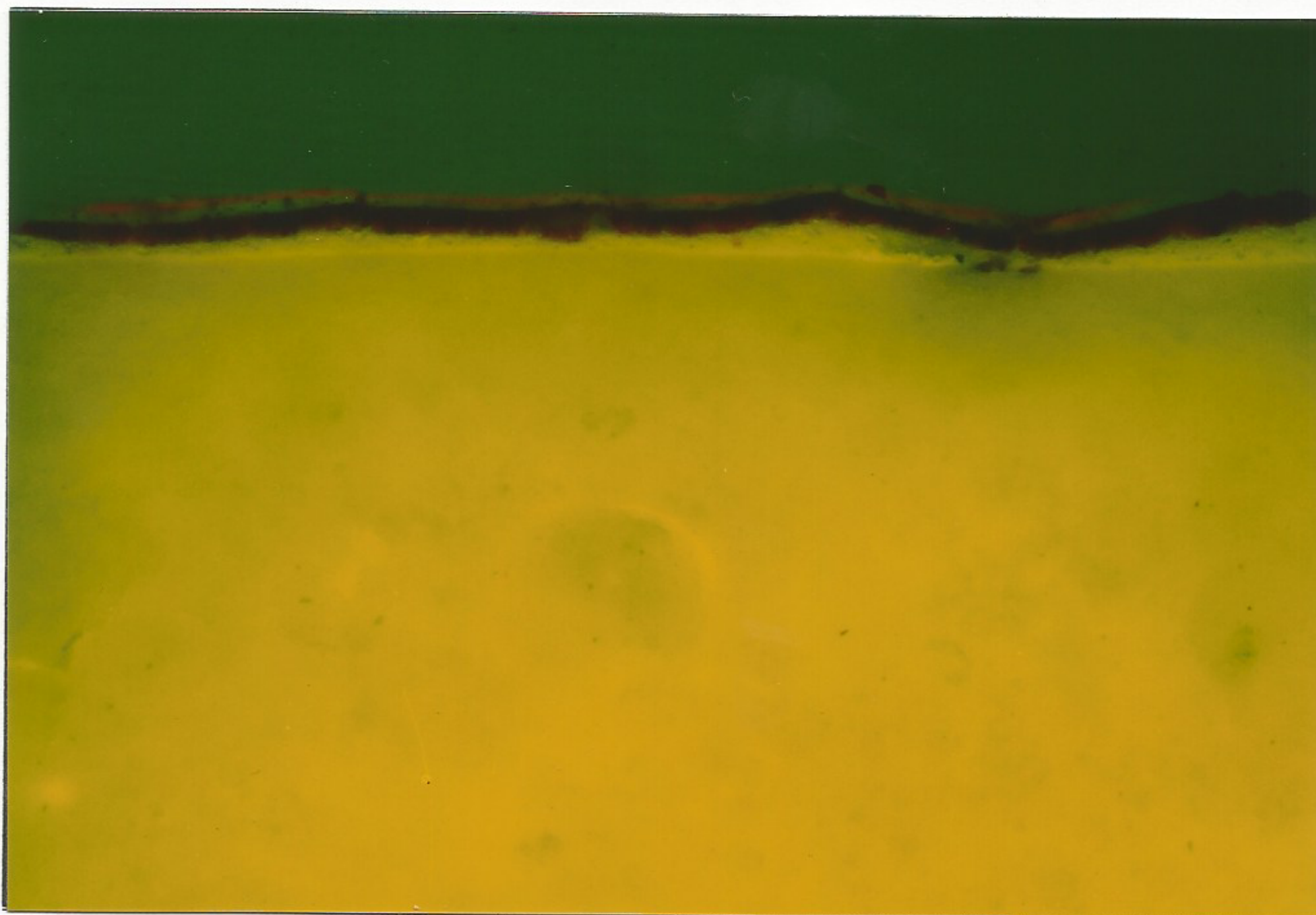


EBP 468 (240-fach) [F29/93-6] "Boden"

Lucas Cranach d.Ä.:
Altar Georg des Bärtigen (Barbaratafel) ; Dom zu Meissen
Diplomarbeit Petra Barkowsky, HfBK Dresden 1980

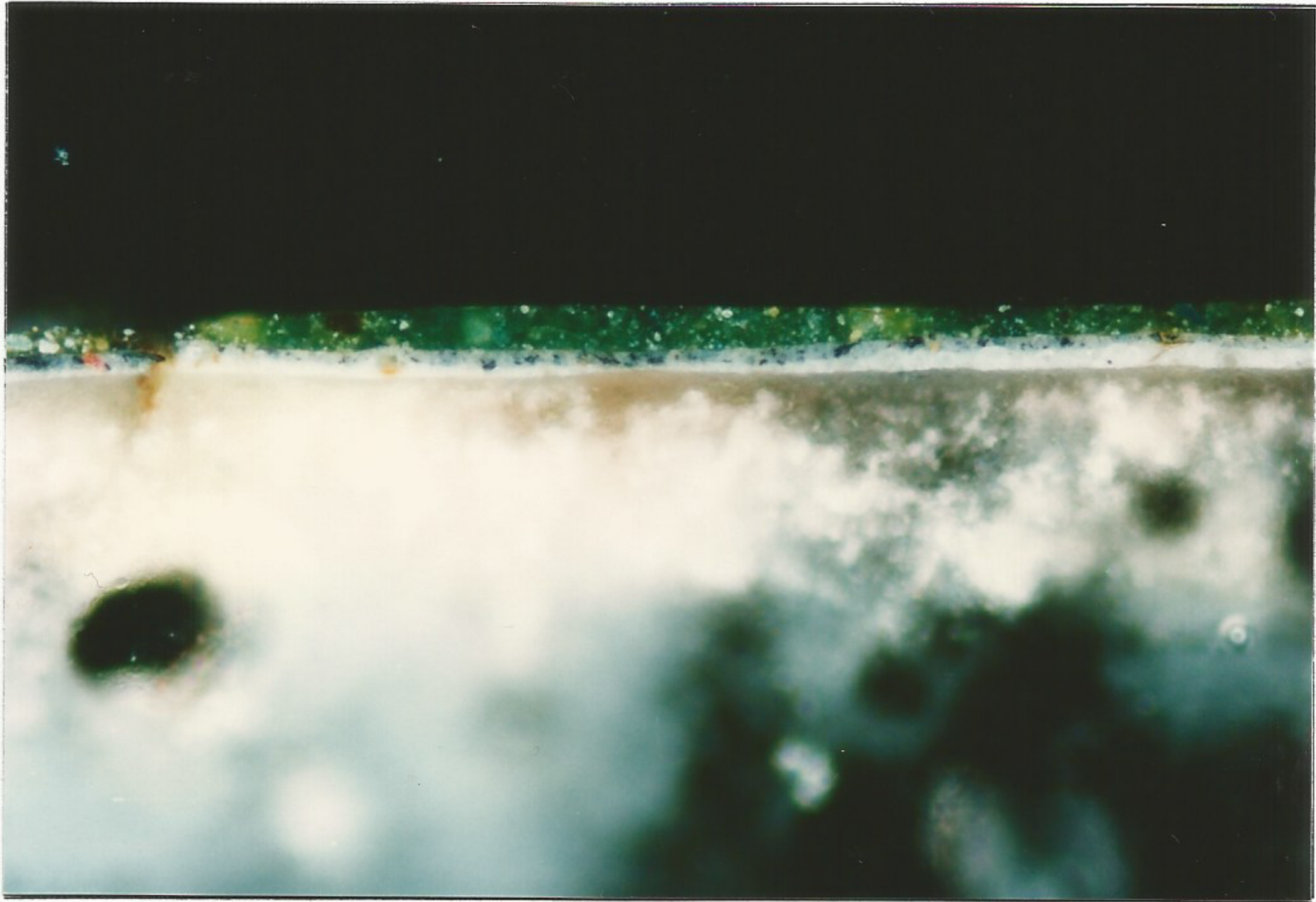


EBP 469 (240-fach) [F29/93-2] "Georg der Bärtige; rotes Gewand"

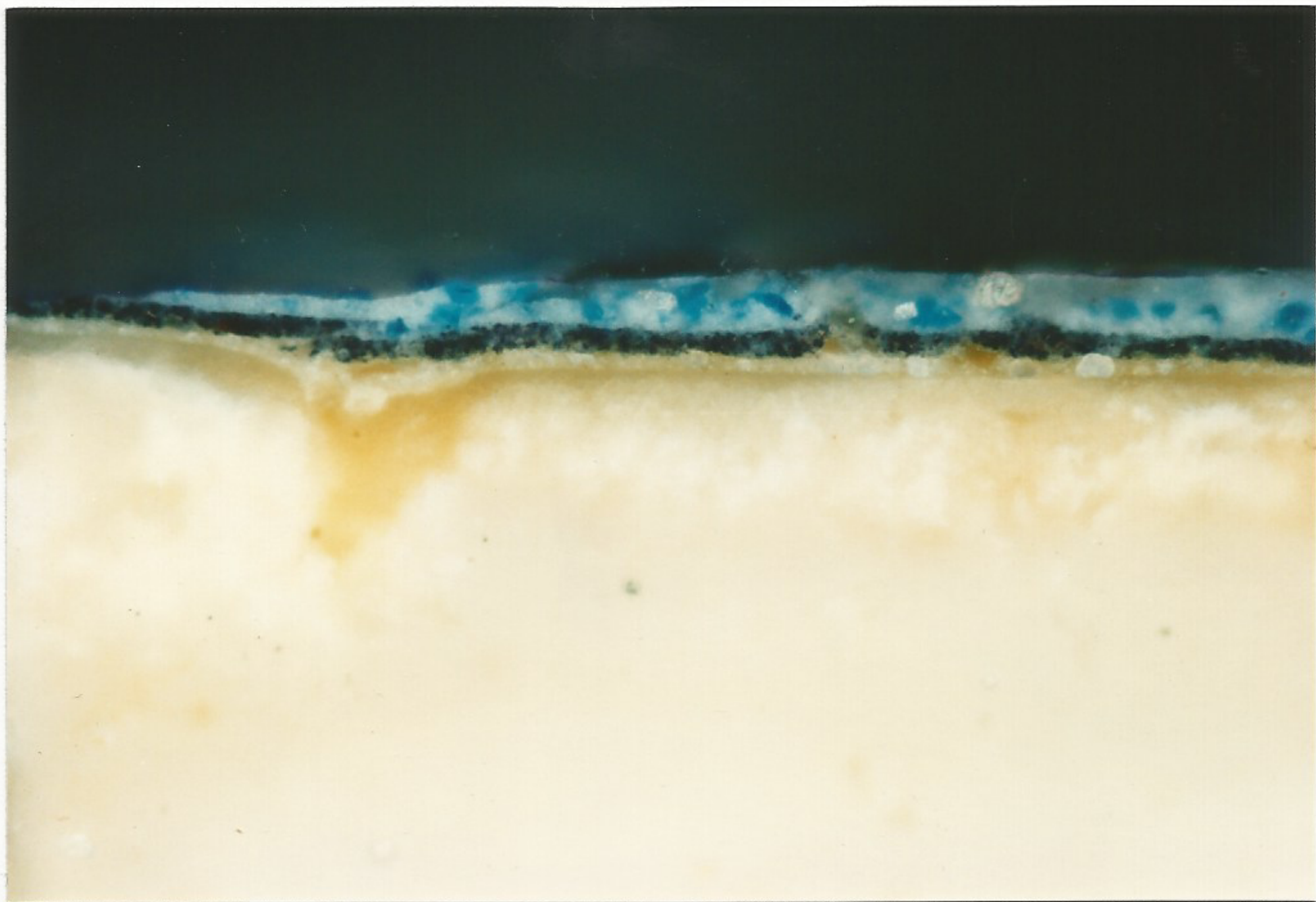


EBP 469 (240-fach) [F29/93-1] "Fluoreszenzaufnahme vom obigen Schliff"

Lucas Cranach d. Ä.:
Altar Georg des Bärtigen (Barbaratafel)
Dom zu Meissen
[Diplomarbeit Petra Barkowsky, HFBK 1980]

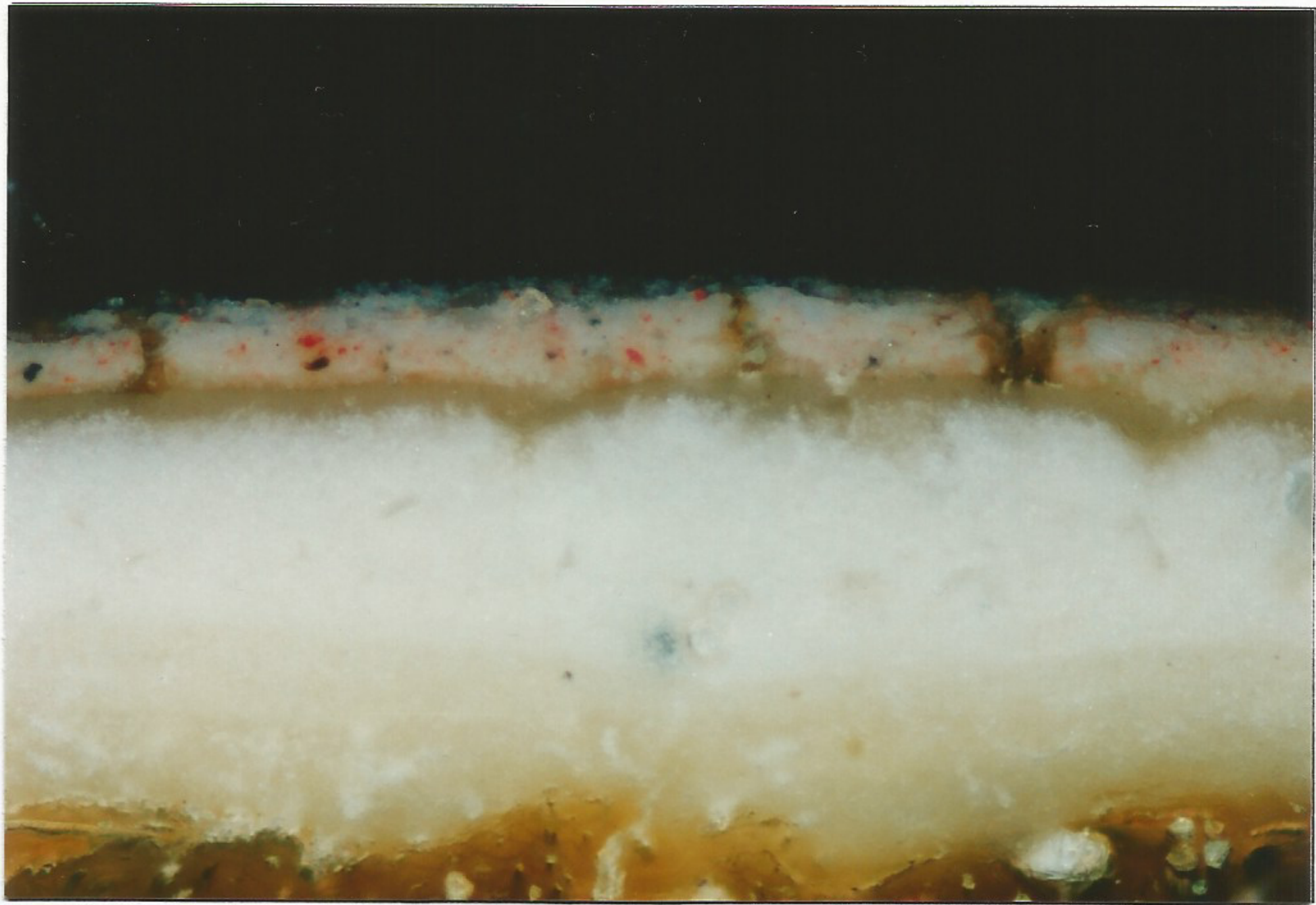


EBP 470: grüner Mantel; 240-fach; F28/93-24

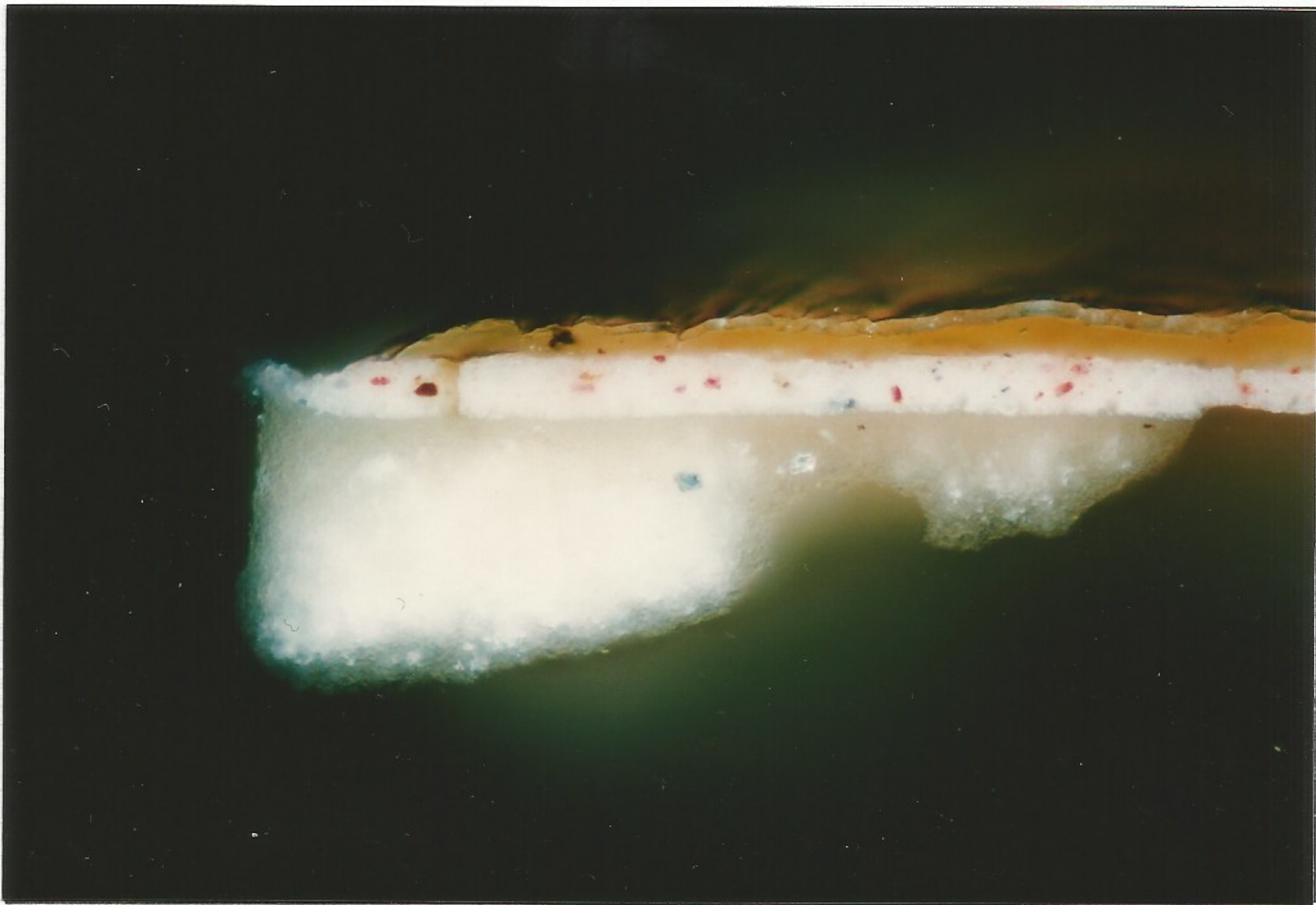


EBP 471: blaues Gewand; 240-fach; F28/93-20

Lucas Cranach d. Ä.:
Altar Georg des Bärtigen (Barbaratafel)
Dom zu Meißen
[Diplomarbeit Petra Barkowsky, HFBK 1980]

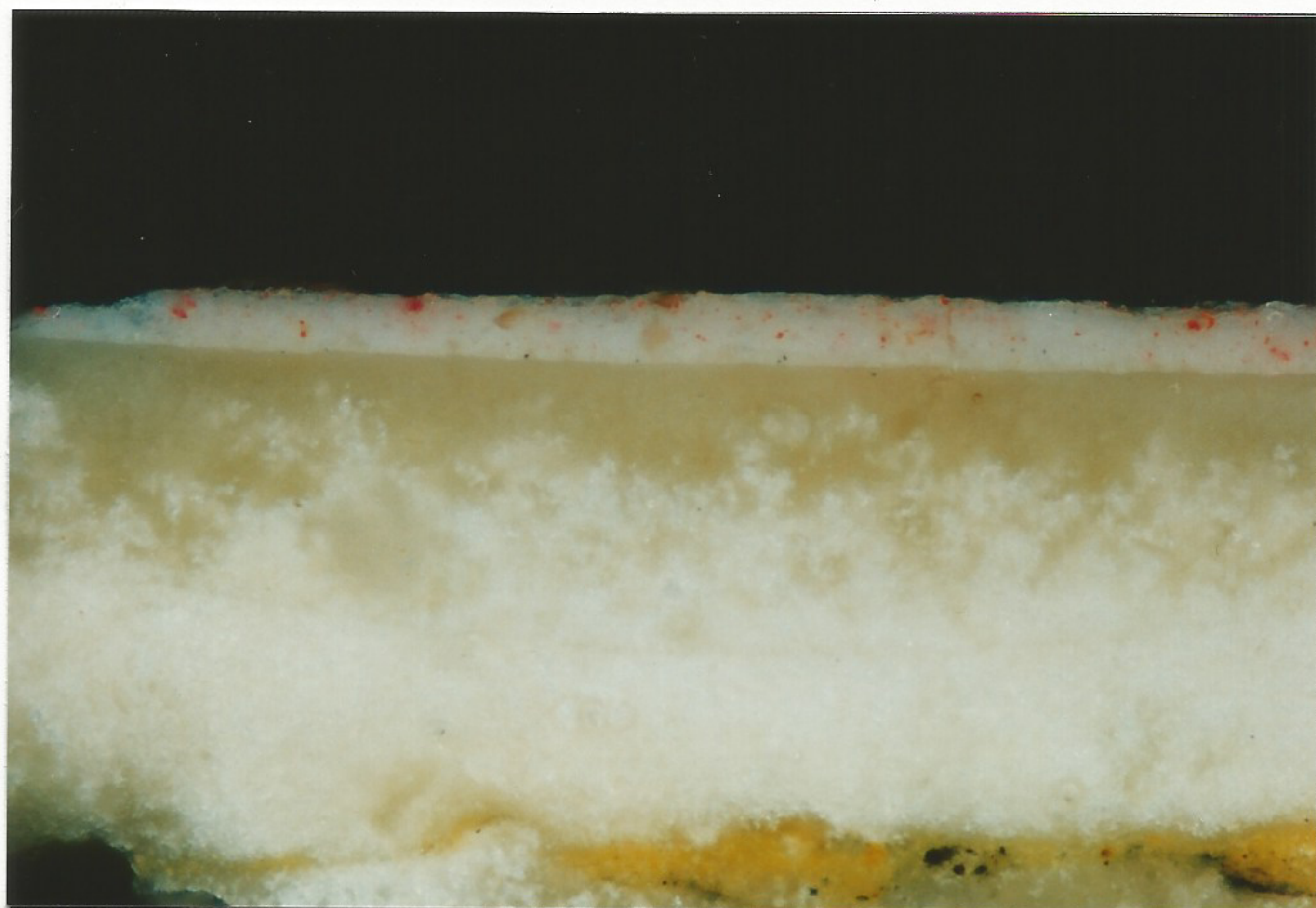


EBP 483: Inkarnat Petrushand; 240-fach; F28/93-12

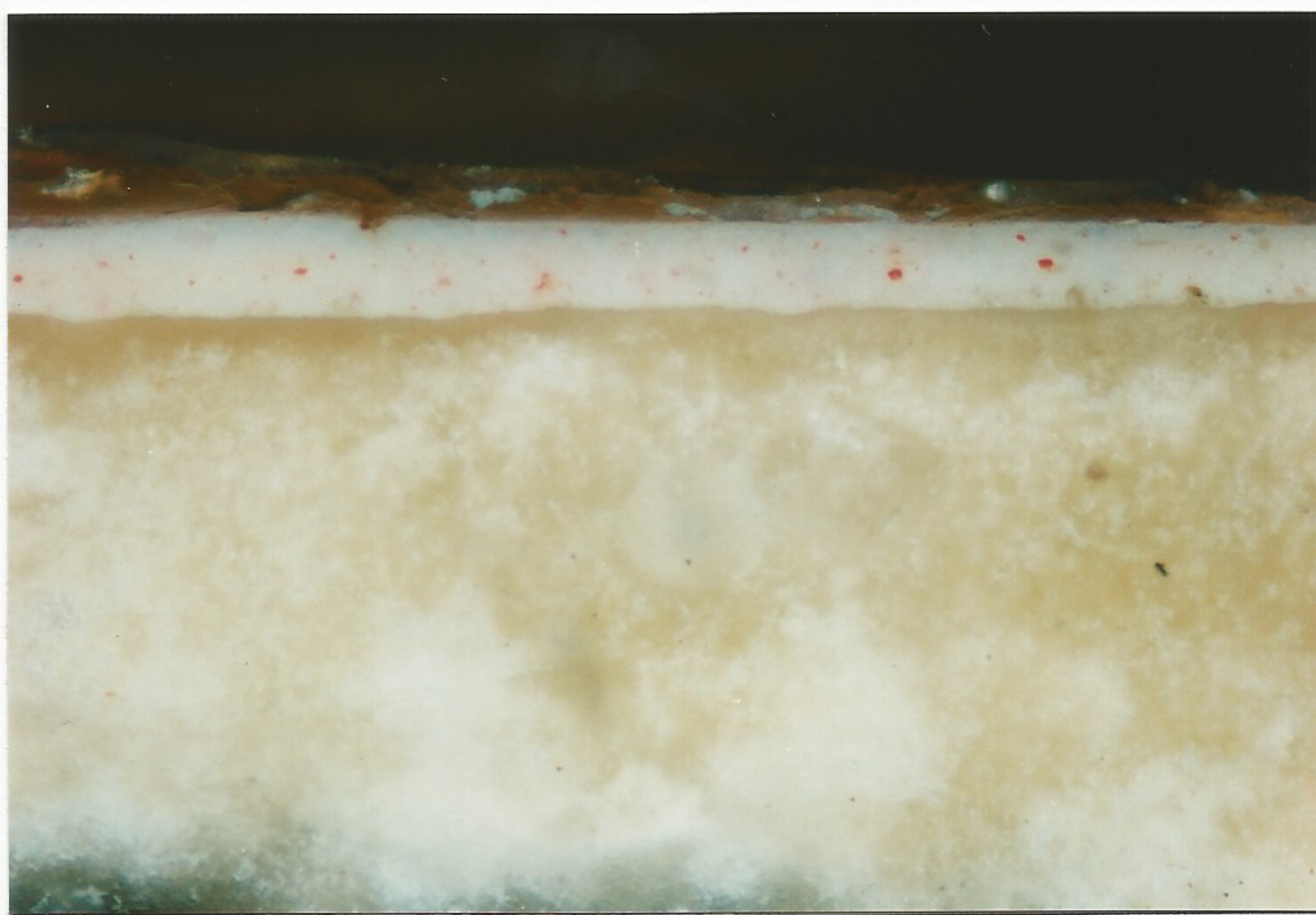


EBP 484: Inkarnat Georghand; 240-fach; F28/93-13

Lucas Cranach d. Ä.:
Altar Georg des Bärtigen (Barbaratafel)
Dom zu Meißen
[Diplomarbeit Petra Barkowsky, HFBK 1980]

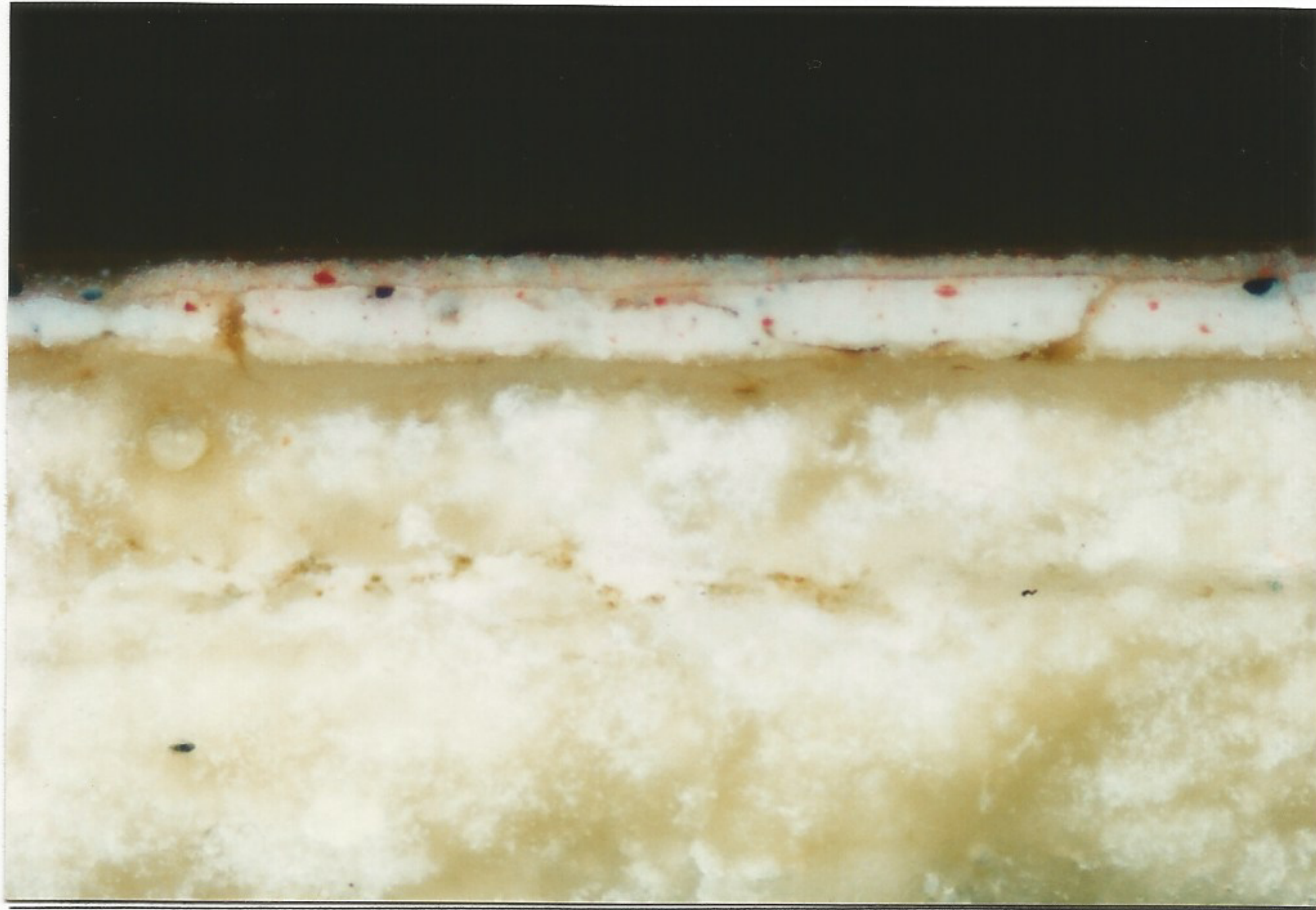


EBP 485: Inkarnat Hand der Maria; 240-fach; F28/93-14

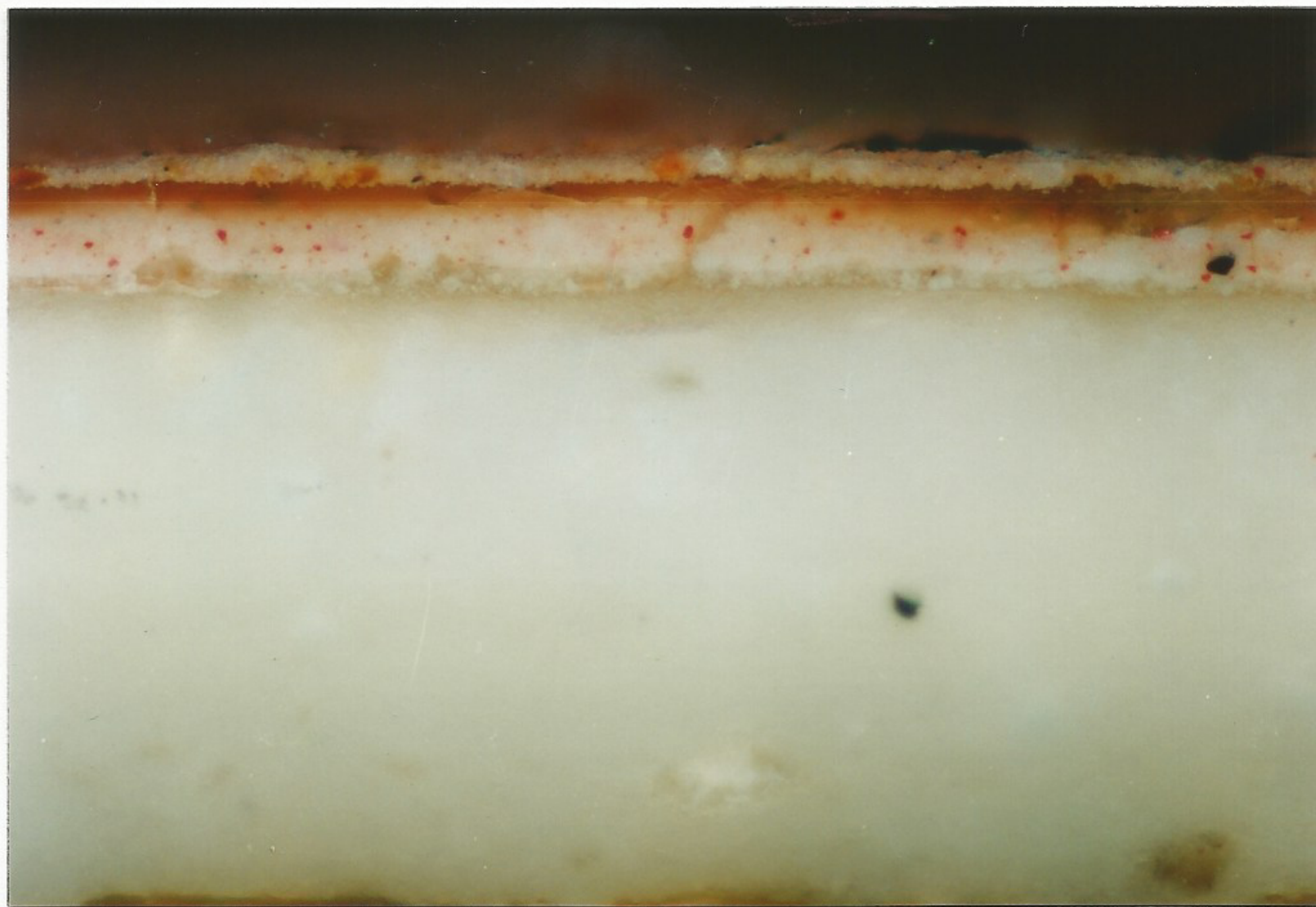


EBP 486: Inkarnat Christusknie, links; 240-fach; F28/93-15

Lucas Cranach d. Ä.:
Altar Georg des Bärtigen (Barbaratafel)
Dom zu Meißen
[Diplomarbeit Petra Barkowsky, HFBK 1980]

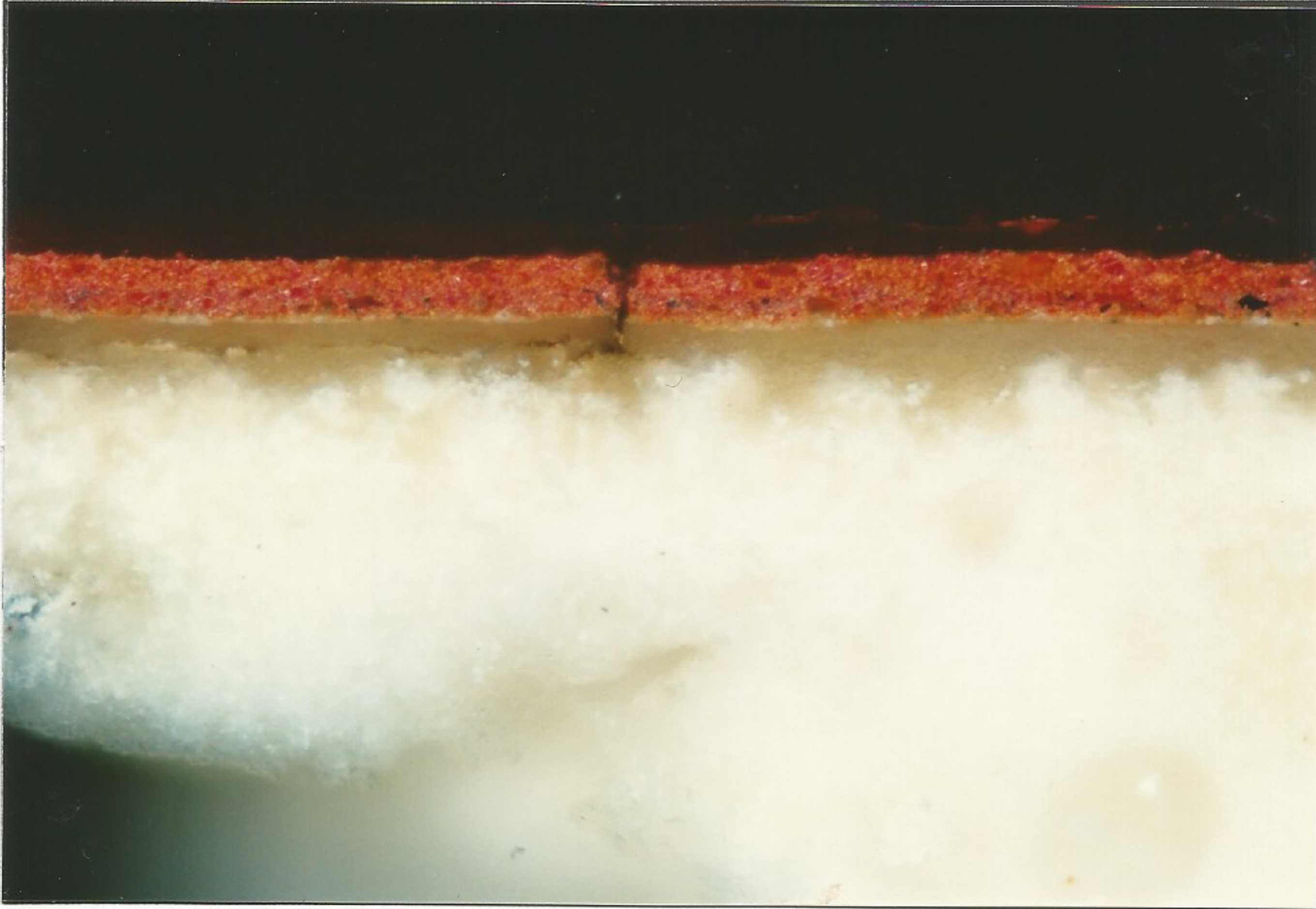


EBP 487: Inkarnat Christuskie, rechts; 240-fach; F28/93-16

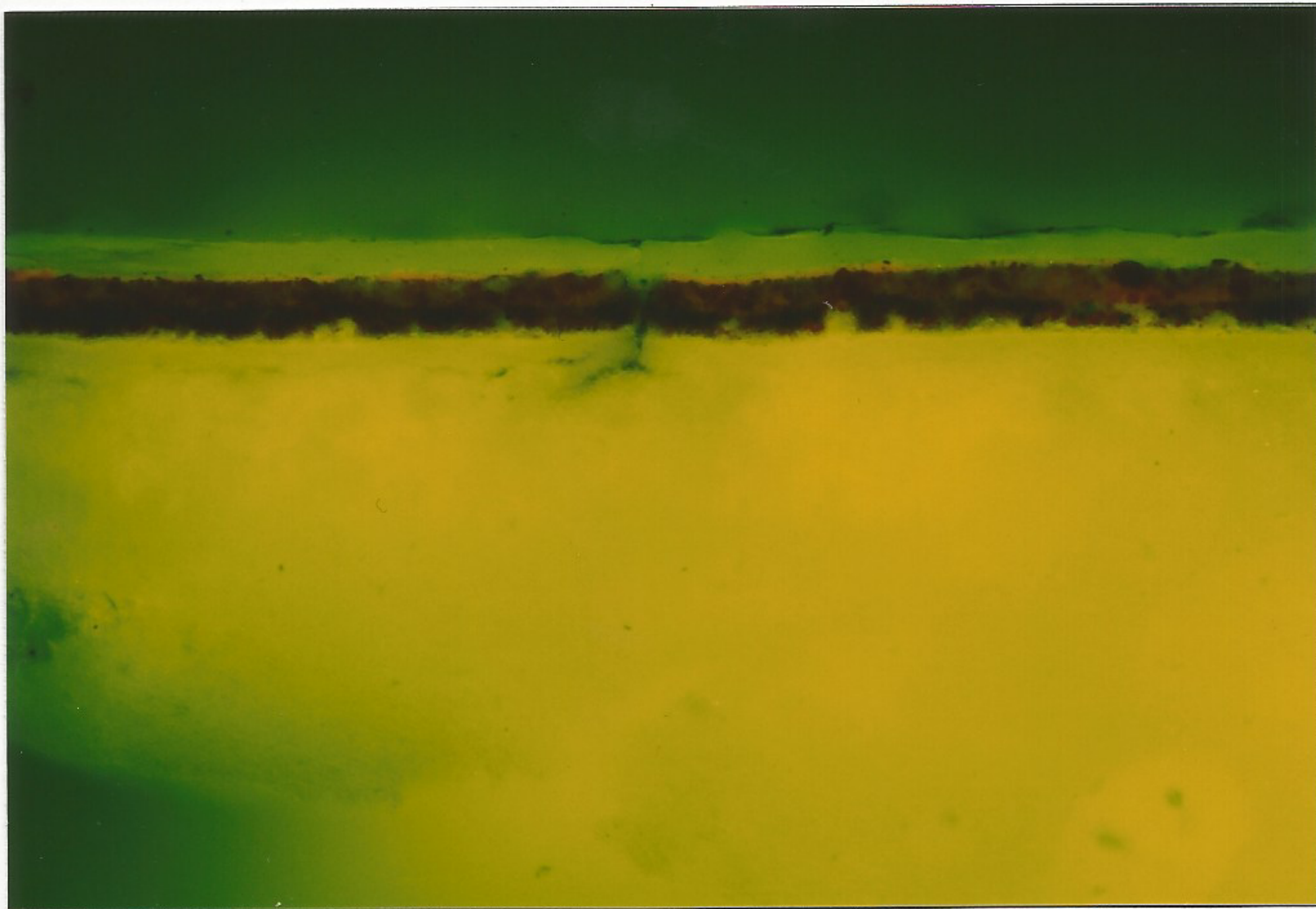


EBP 467: Inkarnat, (?); 240-fach; F28/93-22

Lucas Cranach d. Ä.:
Altar Georg des Bärtigen (Barbaratafel)
Dom zu Meissen
[Diplomarbeit Petra Barkowsky, HFBK 1980]



EBP 488: Gewand des Johannes; 240-fach; F28/93-17



EBP 488: Gewand des Johannes; 240-fach; F28/93-19
Fluoreszenzaufnahme