



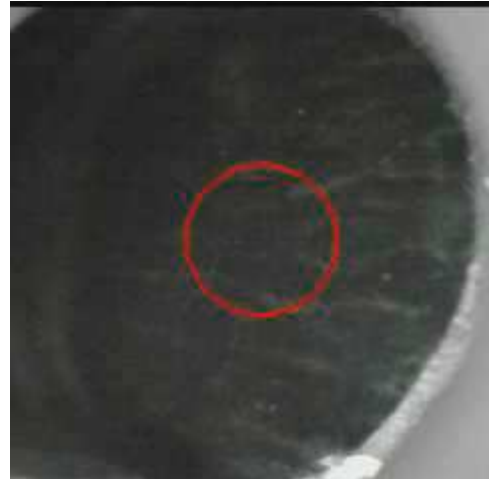


Thermo Fisher Scientific
2 Radcliff Road
Tewksbury, MA 01876 USA

Certificate of Verification

XL3t-69288

Reading No 1
Mode Mining
Time 2019-08-22 17:09
Duration 121.47
Units ppm
Sigma Value 2
Sequence Final
Flags 3mm
INV NR DE_LHW_G163_FR-none
OBJEKT Tondo_LHW
MATERIAL HOLZ FASSUNG
ANALYSESTELLE P1 Hintergrund
MESSAUFBAU STATIV
FILTER m30lo30hi30li30
User Login Stein



	ppm	+/-	Error
Ce	<LOD	:	166.700
La	<LOD	:	135.289
Ba	<LOD	:	145.727
Sb	<LOD	:	61.153
Sn	<LOD	:	34.780
Cd	<LOD	:	21.307
Ag	<LOD	:	15.285
BaI	874650.063	+/-	1308.203
Nb	<LOD	:	23.281
Zr	<LOD	:	96.442
Y	<LOD	:	20.850
Sr	88.439	+/-	7.210
Rb	<LOD	:	37.943
Th	<LOD	:	1174.477
Bi	<LOD	:	1176.658
Au	<LOD	:	34.741
As	2254.781	+/-	136.051
Se	<LOD	:	29.386
Pb	11108.390	+/-	235.556
Hg	<LOD	:	19.374
Zn	<LOD	:	65.914
Cu	67840.859	+/-	1069.040
Ni	<LOD	:	58.484
Co	<LOD	:	56.833
Fe	481.509	+/-	72.265
Mn	<LOD	:	111.565
Cr	<LOD	:	42.842
V	<LOD	:	41.315
Ti	383.332	+/-	137.681
Ca	16581.377	+/-	347.793
K	1924.490	+/-	178.561
Al	<LOD	:	858.675
P	1020.631	+/-	115.970
Si	8619.673	+/-	482.961
Cl	3037.050	+/-	81.277
S	11377.188	+/-	209.849
Mg	<LOD	:	9974.773

Supervised By: _____



Thermo Fisher Scientific
2 Radcliff Road
Tewksbury, MA 01876 USA

Certificate of Verification

XL3t-69288

Reading No 2
Mode Mining
Time 2019-08-22 17:16
Duration 120.52
Units ppm
Sigma Value 2
Sequence Final
Flags 3mm
INV NR DE_LHW_G163_FR-none
OBJEKT Tondo_LHW
MATERIAL HOLZ FASSUNG
ANALYSESTELLE P2 Hintergrund
MESSAUFBAU STATIV
FILTER m30lo30hi30li30
User Login Stein



	ppm	+/-	Error
Ce	<LOD	:	149.847
La	<LOD	:	125.273
Ba	<LOD	:	132.554
Sb	<LOD	:	45.951
Sn	<LOD	:	51.346
Cd	<LOD	:	19.442
Ag	<LOD	:	10.096
BaI	876329.125	+/-	1240.174
Nb	<LOD	:	19.565
Zr	<LOD	:	84.725
Y	<LOD	:	17.303
Sr	135.003	+/-	8.013
Rb	<LOD	:	31.963
Th	<LOD	:	988.307
Bi	<LOD	:	1037.129
Au	<LOD	:	27.921
As	2028.769	+/-	116.723
Se	<LOD	:	30.320
Pb	8839.298	+/-	183.548
Hg	<LOD	:	16.338
Zn	<LOD	:	59.550
Cu	57918.813	+/-	900.848
Ni	<LOD	:	52.879
Co	<LOD	:	52.820
Fe	428.191	+/-	68.766
Mn	<LOD	:	104.910
Cr	<LOD	:	42.064
V	<LOD	:	38.763
Ti	371.086	+/-	129.662
Ca	28383.506	+/-	490.857
K	1668.153	+/-	169.029
Al	1126.744	+/-	608.348
P	1181.790	+/-	121.300
Si	6573.773	+/-	433.851
Cl	3179.741	+/-	82.279
S	11799.093	+/-	208.078
Mg	<LOD	:	18729.951

Supervised By: _____

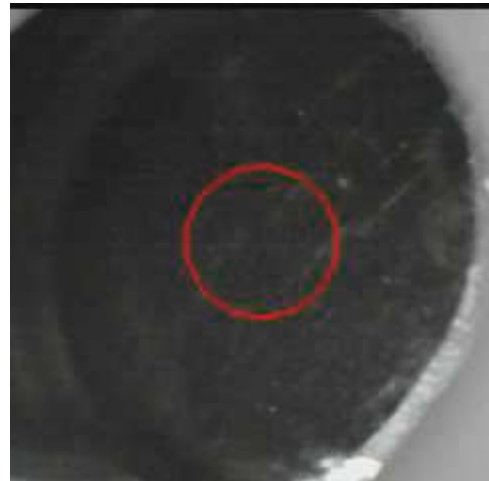


Thermo Fisher Scientific
 2 Radcliff Road
 Tewksbury, MA 01876 USA

Certificate of Verification

XL3t-69288

Reading No 3
 Mode Mining
 Time 2019-08-22 17:22
 Duration 120.40
 Units ppm
 Sigma Value 2
 Sequence Final
 Flags 3mm
 INV NR DE_LHW_G163_FR-none
 OBJEKT Tondo_LHW
 MATERIAL HOLZ FASSUNG
 ANALYSESTELLE P3 Schabe schwarz
 MESSAUFBAU STATIV
 FILTER m30lo30hi30li30
 User Login Stein



	ppm	+/-	Error
Ce	<LOD	:	133.062
La	<LOD	:	109.003
Ba	<LOD	:	116.351
Sb	<LOD	:	67.387
Sn	<LOD	:	39.201
Cd	<LOD	:	17.486
Ag	<LOD	:	16.903
BaI	815549.563	+/-	1696.666
Nb	18.227	+/-	9.260
Zr	<LOD	:	58.351
Y	<LOD	:	11.659
Sr	141.491	+/-	7.525
Rb	<LOD	:	23.725
Th	<LOD	:	694.893
Bi	<LOD	:	705.986
Au	<LOD	:	21.315
As	1432.608	+/-	84.731
Se	<LOD	:	15.319
Pb	4798.157	+/-	105.056
Hg	<LOD	:	13.718
Zn	772.900	+/-	42.057
Cu	104.823	+/-	24.923
Ni	<LOD	:	51.841
Co	<LOD	:	54.120
Fe	691.073	+/-	95.994
Mn	<LOD	:	165.507
Cr	<LOD	:	48.634
V	<LOD	:	38.352
Ti	<LOD	:	184.763
Ca	142176.297	+/-	1830.807
K	2982.322	+/-	231.123
Al	1811.376	+/-	845.672
P	740.147	+/-	152.179
Si	8575.717	+/-	544.090
Cl	3049.011	+/-	83.562
S	17004.625	+/-	264.308
Mg	<LOD	:	11782.822

Supervised By: _____

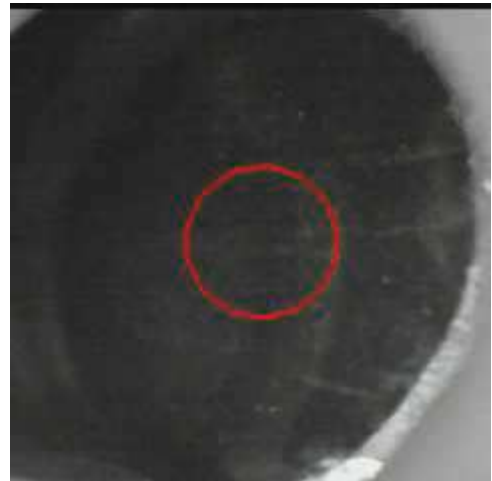


Thermo Fisher Scientific
2 Radcliff Road
Tewksbury, MA 01876 USA

Certificate of Verification

XL3t-69288

Reading No 4
Mode Mining
Time 2019-08-22 17:26
Duration 10.45
Units ppm
Sigma Value 2
Sequence Final
Flags 3mm
INV NR DE_LHW_G163_FR-none
OBJEKT Tondo_LHW
MATERIAL HOLZ FASSUNG
ANALYSESTELLE P4 Schabe Hoehung
MESSAUFBAU STATIV
FILTER m30lo30hi30li30
User Login Stein



	ppm	+/-	Error
Sb	<LOD	:	83.320
Sn	<LOD	:	60.090
Cd	<LOD	:	49.948
Ag	<LOD	:	39.008
BaI	981499.125	+/-	390.530
Nb	<LOD	:	67.733
Zr	<LOD	:	158.209
Y	<LOD	:	39.032
Sr	163.422	+/-	16.197
Rb	<LOD	:	79.262
Th	<LOD	:	2138.080
Bi	<LOD	:	1929.352
Au	<LOD	:	66.486
As	3828.150	+/-	277.754
Se	<LOD	:	42.064
Pb	13868.642	+/-	513.187
Hg	<LOD	:	37.155
Zn	295.448	+/-	46.412
Cu	95.949	+/-	44.296
Ni	<LOD	:	102.104
Co	<LOD	:	93.323
Fe	249.298	+/-	136.478
Mn	<LOD	:	239.448
Cr	<LOD	:	1503.389
V	<LOD	:	2293.899
Ti	<LOD	:	5847.474

Supervised By: _____

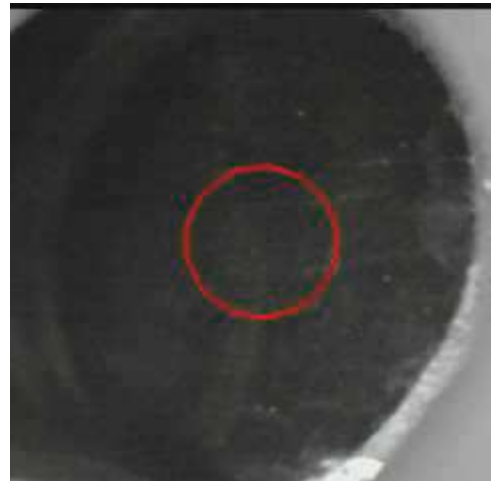


Thermo Fisher Scientific
2 Radcliff Road
Tewksbury, MA 01876 USA

Certificate of Verification

XL3t-69288

Reading No 5
Mode Mining
Time 2019-08-22 17:29
Duration 120.74
Units ppm
Sigma Value 2
Sequence Final
Flags 3mm
INV NR DE_LHW_G163_FR-none
OBJEKT Tondo_LHW
MATERIAL HOLZ FASSUNG
ANALYSESTELLE P4 Schabe Hoehung
MESSAUFBAU STATIV
FILTER m30lo30hi30li30
User Login Stein



	ppm	+/-	Error
Ce	<LOD	:	137.928
La	<LOD	:	114.327
Ba	<LOD	:	120.823
Sb	<LOD	:	42.815
Sn	<LOD	:	47.697
Cd	<LOD	:	17.362
Ag	<LOD	:	12.121
BaI	872004.063	+/-	1225.511
Nb	26.344	+/-	13.394
Zr	<LOD	:	79.589
Y	<LOD	:	17.319
Sr	157.765	+/-	7.935
Rb	<LOD	:	38.028
Th	<LOD	:	1002.893
Bi	<LOD	:	1021.467
Au	<LOD	:	28.506
As	3281.617	+/-	128.810
Se	<LOD	:	19.071
Pb	11237.276	+/-	218.518
Hg	<LOD	:	16.938
Zn	249.113	+/-	22.131
Cu	83.205	+/-	22.234
Ni	<LOD	:	50.796
Co	<LOD	:	50.321
Fe	256.781	+/-	71.146
Mn	<LOD	:	134.177
Cr	<LOD	:	45.079
V	<LOD	:	33.426
Ti	<LOD	:	257.798
Ca	59688.645	+/-	1055.801
K	1883.320	+/-	189.046
Al	1821.738	+/-	706.285
P	1351.193	+/-	163.017
Si	8726.769	+/-	526.789
Cl	3681.722	+/-	99.152
S	25793.586	+/-	470.204
Mg	<LOD	:	12272.513

Supervised By: _____

Certificate of Verification

XL3t-69288

Reading No 6
Mode Mining
Time 2019-08-22 17:36
Duration 121.42
Units ppm
Sigma Value 2
Sequence Final
Flags 3mm
INV NR DE_LHW_G163_FR-none
OBJEKT Tondo_LHW
MATERIAL HOLZ FASSUNG
ANALYSESTELLE P5 Inkarnat
MESSAUFBAU STATIV
FILTER m30lo30hi30li30
User Login Stein



	ppm	+/-	Error
Ce	<LOD	:	228.032
La	<LOD	:	184.930
Ba	<LOD	:	196.100
Sb	<LOD	:	82.959
Sn	<LOD	:	46.114
Cd	<LOD	:	41.806
Ag	<LOD	:	16.186
BaI	848748.625	+/-	1825.213
Nb	67.808	+/-	36.880
Zr	<LOD	:	177.313
Y	<LOD	:	46.716
Sr	105.484	+/-	10.553
Rb	<LOD	:	111.524
Th	<LOD	:	2350.044
Bi	<LOD	:	1946.772
Au	<LOD	:	69.007
As	9859.537	+/-	315.909
Se	<LOD	:	45.777
Pb	44655.234	+/-	948.130
Hg	<LOD	:	47.557
Zn	365.059	+/-	29.685
Cu	57.938	+/-	24.220
Ni	<LOD	:	67.227
Co	<LOD	:	85.657
Fe	184.705	+/-	80.916
Mn	<LOD	:	249.429
Cr	<LOD	:	57.411
V	<LOD	:	50.494
Ti	818.235	+/-	180.141
Ca	12389.272	+/-	369.162
K	2349.610	+/-	228.487
Al	2410.377	+/-	886.443
P	3778.781	+/-	243.413
Si	12274.957	+/-	687.992
Cl	5041.979	+/-	151.083
S	43740.488	+/-	988.077
Mg	<LOD	:	15247.379

Supervised By: _____



Thermo Fisher Scientific
2 Radcliff Road
Tewksbury, MA 01876 USA

Certificate of Verification

XL3t-69288

Reading No 7
Mode Mining
Time 2019-08-22 17:42
Duration 121.71
Units ppm
Sigma Value 2
Sequence Final
Flags 3mm
INV NR DE_LHW_G163_FR-none
OBJEKT Tondo_LHW
MATERIAL HOLZ FASSUNG
ANALYSESTELLE P6 Inkarnat Schattierung
MESSAUFBAU STATIV
FILTER m30lo30hi30li30
User Login Stein



	ppm	+/-	Error
Ce	<LOD	:	173.350
La	<LOD	:	142.528
Ba	<LOD	:	149.859
Sb	<LOD	:	53.261
Sn	<LOD	:	54.475
Cd	24.952	+/-	14.805
Ag	<LOD	:	18.326
Bal	850989.375	+/-	1583.060
Nb	51.046	+/-	24.164
Zr	<LOD	:	122.219
Y	<LOD	:	30.988
Sr	84.503	+/-	7.836
Rb	<LOD	:	71.654
Th	<LOD	:	1659.060
Bi	<LOD	:	1514.341
Au	<LOD	:	53.128
As	7031.595	+/-	227.144
Se	<LOD	:	24.232
Pb	27479.492	+/-	550.760
Hg	<LOD	:	36.905
Zn	377.870	+/-	28.451
Cu	68.600	+/-	22.703
Ni	<LOD	:	60.728
Co	<LOD	:	91.905
Fe	541.125	+/-	89.115
Mn	<LOD	:	147.142
Cr	<LOD	:	49.634
V	<LOD	:	37.810
Ti	246.641	+/-	127.445
Ca	15033.239	+/-	403.477
K	3102.738	+/-	235.839
Al	3877.682	+/-	916.846
P	3718.585	+/-	233.715
Si	14957.588	+/-	728.822
Cl	5416.119	+/-	149.737
S	42699.215	+/-	905.629
Mg	24275.553	+/-	10103.613

Supervised By: _____

Certificate of Verification

XL3t-69288

Reading No 8
Mode Mining
Time 2019-08-22 17:48
Duration 120.96
Units ppm
Sigma Value 2
Sequence Final
Flags 3mm
INV NR DE_LHW_G163_FR-none
OBJEKT Tondo_LHW
MATERIAL HOLZ FASSUNG
ANALYSESTELLE P7 Lippen
MESSAUFBAU STATIV
FILTER m30lo30hi30li30
User Login Stein



	ppm	+/-	Error
Ce	<LOD	:	161.161
La	<LOD	:	131.681
Ba	<LOD	:	138.402
Sb	<LOD	:	71.996
Sn	<LOD	:	33.205
Cd	29.779	+/-	14.088
Ag	<LOD	:	14.639
Bal	872832.813	+/-	1322.349
Nb	45.787	+/-	22.464
Zr	<LOD	:	114.674
Y	<LOD	:	28.790
Sr	124.687	+/-	8.695
Rb	<LOD	:	64.611
Th	<LOD	:	1568.119
Bi	<LOD	:	1442.210
Au	<LOD	:	50.173
As	6170.503	+/-	209.023
Se	<LOD	:	23.764
Pb	24689.771	+/-	494.554
Hg	<LOD	:	35.298
Zn	243.200	+/-	23.075
Cu	44.273	+/-	21.167
Ni	<LOD	:	60.313
Co	<LOD	:	52.307
Fe	205.538	+/-	73.538
Mn	<LOD	:	174.254
Cr	<LOD	:	48.721
V	<LOD	:	39.424
Ti	374.386	+/-	135.526
Ca	24315.188	+/-	572.991
K	2999.206	+/-	231.185
Al	6681.527	+/-	969.579
P	3996.291	+/-	229.065
Si	12896.859	+/-	665.340
Cl	4831.196	+/-	134.208
S	39468.699	+/-	825.019
Mg	<LOD	:	17002.164

Supervised By: _____

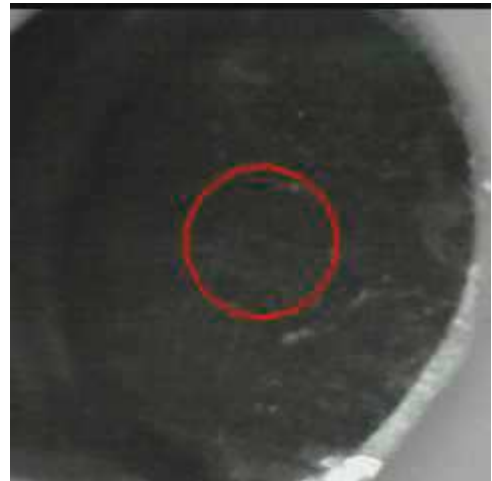


Thermo Fisher Scientific
2 Radcliff Road
Tewksbury, MA 01876 USA

Certificate of Verification

XL3t-69288

Reading No 9
Mode Mining
Time 2019-08-22 17:53
Duration 120.92
Units ppm
Sigma Value 2
Sequence Final
Flags 3mm
INV NR DE_LHW_G163_FR-none
OBJEKT Tondo_LHW
MATERIAL HOLZ FASSUNG
ANALYSESTELLE P8 Haar
MESSAUFBAU STATIV
FILTER m30lo30hi30li30
User Login Stein



	ppm	+/-	Error
Ce	<LOD	:	135.714
La	<LOD	:	112.239
Ba	<LOD	:	117.260
Sb	<LOD	:	41.242
Sn	<LOD	:	28.618
Cd	23.592	+/-	12.139
Ag	<LOD	:	12.422
Bal	843397.313	+/-	1447.240
Nb	20.607	+/-	12.198
Zr	<LOD	:	65.626
Y	<LOD	:	15.614
Sr	152.885	+/-	7.842
Rb	<LOD	:	39.486
Th	<LOD	:	922.806
Bi	<LOD	:	826.621
Au	<LOD	:	28.302
As	2530.497	+/-	112.983
Se	<LOD	:	29.457
Pb	9154.454	+/-	177.046
Hg	<LOD	:	21.536
Zn	391.017	+/-	28.832
Cu	896.450	+/-	52.211
Ni	<LOD	:	51.456
Co	<LOD	:	71.782
Fe	2624.557	+/-	153.120
Mn	<LOD	:	127.561
Cr	<LOD	:	53.650
V	<LOD	:	49.305
Ti	1309.292	+/-	181.738
Ca	70165.844	+/-	1127.088
K	5254.866	+/-	268.622
Al	5526.855	+/-	871.559
P	1401.389	+/-	157.986
Si	32793.070	+/-	983.401
Cl	3570.154	+/-	92.901
S	20765.654	+/-	355.739
Mg	<LOD	:	10484.652

Supervised By: _____

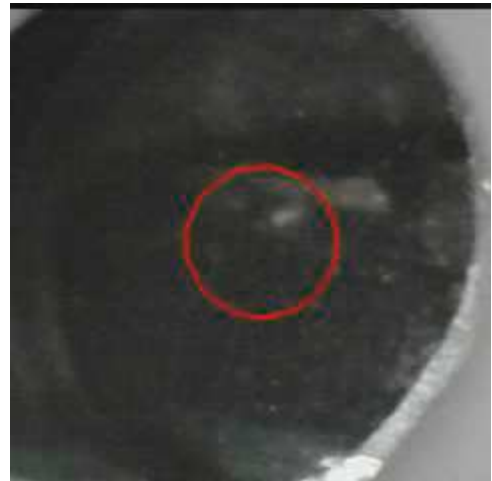


Thermo Fisher Scientific
 2 Radcliff Road
 Tewksbury, MA 01876 USA

Certificate of Verification

XL3t-69288

Reading No 10
 Mode Mining
 Time 2019-08-22 17:58
 Duration 121.81
 Units ppm
 Sigma Value 2
 Sequence Final
 Flags 3mm
 INV NR DE_LHW_G163_FR-none
 OBJEKT Tondo_LHW
 MATERIAL HOLZ FASSUNG
 ANALYSESTELLE P9 Konturlinie
 MESSAUFBAU STATIV
 FILTER m30lo30hi30li30
 User Login Stein



	ppm	+/-	Error
Ce	<LOD	:	121.152
La	<LOD	:	99.851
Ba	<LOD	:	106.743
Sb	<LOD	:	38.232
Sn	<LOD	:	39.028
Cd	18.027	+/-	11.115
Ag	<LOD	:	10.885
Bal	874877.313	+/-	1206.001
Nb	20.293	+/-	5.629
Zr	<LOD	:	36.760
Y	<LOD	:	5.916
Sr	62.565	+/-	4.874
Rb	<LOD	:	11.289
Th	<LOD	:	343.550
Bi	<LOD	:	312.663
Au	<LOD	:	16.987
As	296.865	+/-	36.822
Se	<LOD	:	8.629
Pb	940.448	+/-	35.983
Hg	<LOD	:	8.378
Zn	664.974	+/-	38.329
Cu	549.489	+/-	42.920
Ni	<LOD	:	47.422
Co	<LOD	:	67.118
Fe	1796.931	+/-	133.745
Mn	<LOD	:	185.108
Cr	<LOD	:	62.148
V	<LOD	:	52.400
Ti	321.639	+/-	168.993
Ca	93703.984	+/-	1155.646
K	4592.302	+/-	278.006
Al	1662.962	+/-	730.750
P	1002.075	+/-	130.612
Si	9561.504	+/-	564.045
Cl	2888.395	+/-	80.418
S	7022.073	+/-	132.809
Mg	<LOD	:	11367.313

Supervised By: _____



Thermo Fisher Scientific
2 Radcliff Road
Tewksbury, MA 01876 USA

Certificate of Verification

XL3t-69288

Reading No 11
Mode Mining
Time 2019-08-22 18:05
Duration 121.42
Units ppm
Sigma Value 2
Sequence Final
Flags 3mm
INV NR DE_LHW_G163_FR-none
OBJEKT Tondo_LHW
MATERIAL HOLZ FASSUNG
ANALYSESTELLE P10 Signatur
MESSAUFBAU STATIV
FILTER m30lo30hi30li30
User Login Stein



	ppm	+/-	Error
Ce	<LOD	:	156.438
La	<LOD	:	128.494
Ba	<LOD	:	135.333
Sb	<LOD	:	50.350
Sn	137.123	+/-	27.588
Cd	<LOD	:	19.517
Ag	<LOD	:	9.961
BaI	882390.438	+/-	1197.378
Nb	<LOD	:	20.945
Zr	<LOD	:	75.526
Y	<LOD	:	18.673
Sr	117.458	+/-	7.909
Rb	<LOD	:	45.192
Th	<LOD	:	1052.325
Bi	<LOD	:	877.215
Au	<LOD	:	38.025
As	2420.632	+/-	127.000
Se	<LOD	:	26.778
Pb	10122.769	+/-	204.932
Hg	<LOD	:	29.126
Zn	<LOD	:	57.328
Cu	51285.656	+/-	804.758
Ni	<LOD	:	54.932
Co	<LOD	:	53.707
Fe	456.764	+/-	72.830
Mn	<LOD	:	118.587
Cr	<LOD	:	40.886
V	<LOD	:	37.355
Ti	228.423	+/-	122.568
Ca	25069.084	+/-	454.877
K	2531.125	+/-	198.362
Al	1845.361	+/-	627.091
P	1480.959	+/-	127.031
Si	6491.710	+/-	427.894
Cl	2561.788	+/-	72.751
S	12808.554	+/-	222.021
Mg	<LOD	:	10336.258

Supervised By: _____