

mRFA -Ergebnisse

XL3t-69288

Reading No 1
Mode Mining
Time 2019-08-27 10:34
Duration 120.05
Units ppm
Sigma Value 2
Sequence Final
Flags 3mm
INV NR P276
OBJEKT TAFELGEMAELEN
MATERIAL HOLZ FASSUNG
ANALYSESTELLE P1 HINTERGRUND
MESSAUFBAU STATIV
FILTER m30lo30hi30li30
User Login Raquet



	ppm	+/-	Error
Ce	1.000	+/-	109.387
La	1.000	+/-	90.334
Ba	1.000	+/-	95.826
Sb	1.000	+/-	43.776
Sn	1.000	+/-	34.410
Cd	1.000	+/-	11.575
Ag	1.000	+/-	7.148
Bal	895715.125	+/-	983.874
Nb	29.256	+/-	17.259
Zr	1.000	+/-	68.850
Y	1.000	+/-	15.103
Sr	86.380	+/-	6.542
Rb	1.000	+/-	28.362
Th	1.000	+/-	842.110
Bi	1.000	+/-	909.430
Au	1.000	+/-	22.659
As	3738.869	+/-	154.676
Se	19.605	+/-	14.714
Pb	18155.969	+/-	340.536
Hg	1.000	+/-	13.628
Zn	1.000	+/-	30.794
Cu	39186.066	+/-	670.437
Ni	1.000	+/-	32.420
Co	1.000	+/-	30.072
Fe	131.581	+/-	54.127
Mn	1.000	+/-	70.996
Cr	1.000	+/-	22.889
V	1.000	+/-	17.578
Ti	1.000	+/-	128.929
Ca	6005.222	+/-	174.657
K	246.007	+/-	97.721
Al	1802.050	+/-	568.549
P	1720.395	+/-	140.154
Si	8663.772	+/-	464.158
Cl	2247.460	+/-	67.068
S	22252.250	+/-	398.003
Mg	1.000	+/-	6150.424

mRFA -Ergebnisse

XL3t-69288

Reading No 2
Mode Mining
Time 2019-08-27 10:41
Duration 121.31
Units ppm
Sigma Value 2
Sequence Final
Flags 3mm
INV NR P276
OBJEKT TAFELGEMAEDELDE
MATERIAL HOLZ FASSUNG
ANALYSESTELLE P2 HINTERGRUND
MESSAUFBAU STATIV
FILTER m30lo30hi30li30
User Login Raquet

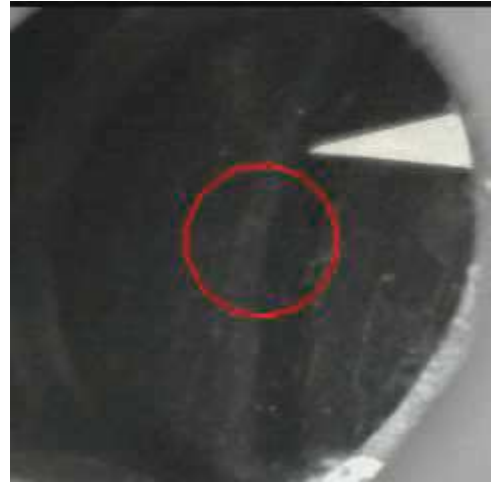


	ppm	+/-	Error
Ce	1.000	+/-	112.195
La	1.000	+/-	91.967
Ba	1.000	+/-	97.995
Sb	1.000	+/-	58.405
Sn	1.000	+/-	27.063
Cd	1.000	+/-	19.851
Ag	1.000	+/-	8.033
Bal	891967.063	+/-	1024.802
Nb	29.978	+/-	17.704
Zr	1.000	+/-	67.698
Y	1.000	+/-	15.496
Sr	107.034	+/-	7.169
Rb	1.000	+/-	29.141
Th	1.000	+/-	862.036
Bi	1.000	+/-	907.105
Au	1.000	+/-	23.789
As	4068.490	+/-	160.512
Se	22.599	+/-	16.142
Pb	18789.982	+/-	352.382
Hg	1.000	+/-	13.905
Zn	1.000	+/-	31.278
Cu	39859.316	+/-	679.048
Ni	1.000	+/-	33.033
Co	1.000	+/-	43.290
Fe	168.445	+/-	55.835
Mn	1.000	+/-	71.350
Cr	1.000	+/-	22.745
V	1.000	+/-	22.325
Ti	99.207	+/-	90.714
Ca	9093.289	+/-	225.462
K	306.002	+/-	100.662
Al	849.928	+/-	525.577
P	1513.063	+/-	135.535
Si	8883.758	+/-	465.126
Cl	2417.987	+/-	69.515
S	21823.818	+/-	387.203
Mg	1.000	+/-	7131.450

mRFA -Ergebnisse

XL3t-69288

Reading No 3
Mode Mining
Time 2019-08-27 10:48
Duration 121.11
Units ppm
Sigma Value 2
Sequence Final
Flags 3mm
INV NR P276
OBJEKT TAFELGEMAELEN
MATERIAL HOLZ FASSUNG
ANALYSESTELLE P3 KRAGEN WEISS
MESSAUFBAU STATIV
FILTER m30lo30hi30li30
User Login Raquet

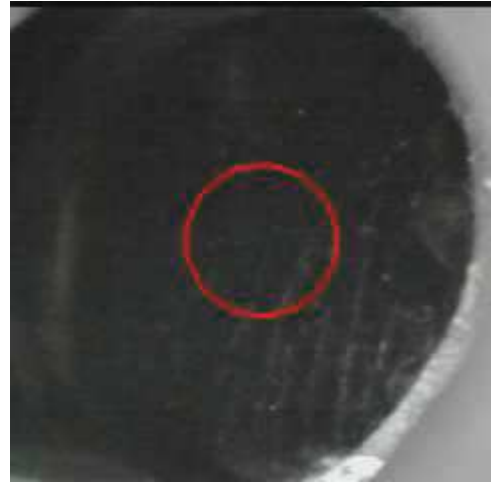


	ppm	+/-	Error
Ce	1.000	+/-	99.214
La	1.000	+/-	82.354
Ba	1.000	+/-	87.010
Sb	1.000	+/-	29.899
Sn	1.000	+/-	24.833
Cd	1.000	+/-	18.321
Ag	1.000	+/-	6.605
Bal	892092.000	+/-	981.927
Nb	28.750	+/-	15.448
Zr	1.000	+/-	54.168
Y	1.000	+/-	13.345
Sr	135.122	+/-	7.219
Rb	1.000	+/-	27.721
Th	1.000	+/-	750.453
Bi	1.000	+/-	755.936
Au	1.000	+/-	20.494
As	4353.010	+/-	148.084
Se	22.767	+/-	16.262
Pb	16830.689	+/-	304.041
Hg	1.000	+/-	12.268
Zn	171.239	+/-	18.208
Cu	1896.979	+/-	72.402
Ni	1.000	+/-	32.571
Co	1.000	+/-	28.354
Fe	1.000	+/-	50.167
Mn	1.000	+/-	78.936
Cr	1.000	+/-	24.855
V	1.000	+/-	18.729
Ti	1.000	+/-	83.696
Ca	24223.873	+/-	495.947
K	445.074	+/-	118.789
Al	1971.910	+/-	646.151
P	2708.671	+/-	189.135
Si	13237.859	+/-	606.629
Cl	3473.228	+/-	94.002
S	38408.863	+/-	705.525
Mg	1.000	+/-	11165.057

mRFA -Ergebnisse

XL3t-69288

Reading No 4
Mode Mining
Time 2019-08-27 10:53
Duration 120.80
Units ppm
Sigma Value 2
Sequence Final
Flags 3mm
INV NR P276
OBJEKT TAFELGEMAELEN
MATERIAL HOLZ FASSUNG
ANALYSESTELLE P4 GEWAND
MESSAUFBAU STATIV
FILTER m30lo30hi30li30
User Login Raquet



	ppm	+/-	Error
Ce	1.000	+/-	79.378
La	1.000	+/-	64.525
Ba	1.000	+/-	69.070
Sb	1.000	+/-	24.628
Sn	1.000	+/-	20.458
Cd	10.169	+/-	9.906
Ag	1.000	+/-	5.676
Bal	885857.938	+/-	974.536
Nb	15.680	+/-	9.725
Zr	1.000	+/-	34.885
Y	1.000	+/-	8.153
Sr	75.176	+/-	4.852
Rb	1.000	+/-	19.369
Th	1.000	+/-	491.859
Bi	1.000	+/-	447.110
Au	1.000	+/-	14.044
As	2194.566	+/-	90.791
Se	1.000	+/-	11.925
Pb	7810.153	+/-	135.551
Hg	1.000	+/-	8.221
Zn	225.930	+/-	19.317
Cu	770.836	+/-	42.505
Ni	1.000	+/-	28.790
Co	1.000	+/-	25.289
Fe	93.799	+/-	55.138
Mn	1.000	+/-	77.937
Cr	1.000	+/-	22.925
V	1.000	+/-	15.670
Ti	1.000	+/-	74.503
Ca	48204.438	+/-	750.113
K	682.134	+/-	130.938
Al	2306.999	+/-	619.610
P	1897.617	+/-	156.326
Si	11637.265	+/-	533.483
Cl	2565.888	+/-	69.073
S	28061.504	+/-	429.508
Mg	7589.912	+/-	6797.664

mRFA -Ergebnisse

XL3t-69288

Reading No 5
Mode Mining
Time 2019-08-27 10:57
Duration 120.26
Units ppm
Sigma Value 2
Sequence Final
Flags 3mm
INV NR P276
OBJEKT TAFELGEMAELENDE
MATERIAL HOLZ FASSUNG
ANALYSESTELLE P5 WANGE
MESSAUFBAU STATIV
FILTER m30lo30hi30li30
User Login Raquet



	ppm	+/-	Error
Ce	1.000	+/-	151.400
La	1.000	+/-	125.024
Ba	2390.016	+/-	178.139
Sb	1.000	+/-	42.021
Sn	1.000	+/-	33.912
Cd	1.000	+/-	18.104
Ag	1.000	+/-	9.122
Bal	846313.375	+/-	1668.056
Nb	66.175	+/-	32.347
Zr	1.000	+/-	104.094
Y	1.000	+/-	27.228
Sr	145.641	+/-	11.047
Rb	1.000	+/-	54.173
Th	1.000	+/-	1385.785
Bi	1.000	+/-	1318.325
Au	1.000	+/-	42.911
As	7933.323	+/-	261.125
Se	39.330	+/-	28.093
Pb	42160.641	+/-	829.950
Hg	191.440	+/-	35.954
Zn	63.180	+/-	15.762
Cu	37.005	+/-	20.988
Ni	1.000	+/-	41.991
Co	41.025	+/-	38.354
Fe	75.685	+/-	68.638
Mn	1.000	+/-	141.405
Cr	1.000	+/-	30.079
V	1.000	+/-	20.438
Ti	1.000	+/-	96.563
Ca	5614.771	+/-	202.215
K	1.000	+/-	167.772
Al	2737.058	+/-	840.382
P	4895.848	+/-	254.865
Si	16109.182	+/-	741.437
Cl	3526.410	+/-	110.345
S	50628.773	+/-	1103.548
Mg	17031.113	+/-	9586.376

mRFA -Ergebnisse

XL3t-69288

Reading No 6
Mode Mining
Time 2019-08-27 11:01
Duration 120.94
Units ppm
Sigma Value 2
Sequence Final
Flags 3mm
INV NR P276
OBJEKT TAFELGEMAELENDE
MATERIAL HOLZ FASSUNG
ANALYSESTELLE P6 NASE
MESSAUFBAU STATIV
FILTER m30lo30hi30li30
User Login Raquet



	ppm	+/-	Error
Ce	1.000	+/-	120.515
La	1.000	+/-	98.554
Ba	1.000	+/-	103.920
Sb	1.000	+/-	36.019
Sn	1.000	+/-	21.422
Cd	1.000	+/-	18.202
Ag	1.000	+/-	7.520
Bal	859182.375	+/-	1408.815
Nb	47.096	+/-	23.895
Zr	1.000	+/-	80.394
Y	1.000	+/-	20.225
Sr	102.986	+/-	8.067
Rb	1.000	+/-	40.709
Th	1.000	+/-	1090.068
Bi	1.000	+/-	1101.740
Au	1.000	+/-	32.785
As	7068.279	+/-	221.747
Se	25.244	+/-	18.032
Pb	28584.947	+/-	556.777
Hg	1.000	+/-	23.699
Zn	112.777	+/-	15.615
Cu	23.731	+/-	18.982
Ni	1.000	+/-	37.038
Co	1.000	+/-	46.500
Fe	228.413	+/-	71.254
Mn	1.000	+/-	86.536
Cr	1.000	+/-	28.584
V	1.000	+/-	18.380
Ti	1.000	+/-	96.729
Ca	14217.870	+/-	369.245
K	216.429	+/-	122.193
Al	3229.502	+/-	804.223
P	5017.657	+/-	244.511
Si	16270.746	+/-	721.891
Cl	3263.053	+/-	99.963
S	46572.477	+/-	977.100
Mg	15836.408	+/-	8862.561

mRFA -Ergebnisse

XL3t-69288

Reading No 7
Mode Mining
Time 2019-08-27 11:04
Duration 121.19
Units ppm
Sigma Value 2
Sequence Final
Flags 3mm
INV NR P276
OBJEKT TAFELGEMAELEN
MATERIAL HOLZ FASSUNG
ANALYSESTELLE P7 LIPPEN
MESSAUFBAU STATIV
FILTER m30lo30hi30li30
User Login Raquet

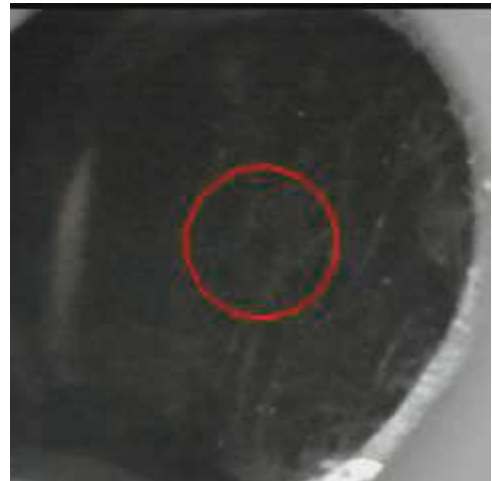


	ppm	+/-	Error
Ce	1.000	+/-	104.077
La	1.000	+/-	85.055
Ba	1.000	+/-	89.505
Sb	1.000	+/-	33.078
Sn	1.000	+/-	22.161
Cd	23.347	+/-	13.286
Ag	1.000	+/-	7.064
Bal	870124.188	+/-	1237.392
Nb	22.227	+/-	17.201
Zr	1.000	+/-	60.052
Y	1.000	+/-	14.783
Sr	94.747	+/-	7.086
Rb	1.000	+/-	36.247
Th	1.000	+/-	828.218
Bi	1.000	+/-	689.911
Au	1.000	+/-	30.375
As	4960.494	+/-	162.648
Se	1.000	+/-	20.601
Pb	18203.977	+/-	334.553
Hg	118.965	+/-	24.617
Zn	73.731	+/-	14.585
Cu	26.904	+/-	18.198
Ni	1.000	+/-	33.983
Co	1.000	+/-	29.980
Fe	390.557	+/-	74.917
Mn	1.000	+/-	78.015
Cr	1.000	+/-	39.277
V	1.000	+/-	21.259
Ti	1.000	+/-	129.591
Ca	19363.158	+/-	431.352
K	802.111	+/-	137.290
Al	10579.744	+/-	1051.339
P	4426.519	+/-	224.144
Si	18438.814	+/-	747.785
Cl	3157.878	+/-	92.022
S	39992.613	+/-	753.145
Mg	9200.018	+/-	8054.279

mRFA -Ergebnisse

XL3t-69288

Reading No 8
Mode Mining
Time 2019-08-27 11:09
Duration 121.89
Units ppm
Sigma Value 2
Sequence Final
Flags 3mm
INV NR P276
OBJEKT TAFELGEMAELEN
MATERIAL HOLZ FASSUNG
ANALYSESTELLE P8 HAARE
MESSAUFBAU STATIV
FILTER m30lo30hi30li30
User Login Raquet

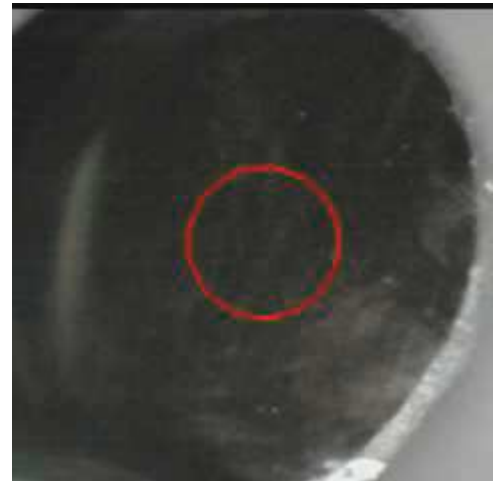


	ppm	+/-	Error
Ce	1.000	+/-	77.623
La	1.000	+/-	63.733
Ba	1.000	+/-	68.016
Sb	1.000	+/-	25.988
Sn	1.000	+/-	23.134
Cd	11.004	+/-	9.880
Ag	1.000	+/-	5.747
Bal	817920.563	+/-	1467.228
Nb	8.709	+/-	6.515
Zr	1.000	+/-	23.807
Y	1.000	+/-	5.073
Sr	100.520	+/-	5.404
Rb	1.000	+/-	11.828
Th	1.000	+/-	319.721
Bi	1.000	+/-	290.231
Au	1.000	+/-	10.521
As	809.490	+/-	54.941
Se	1.000	+/-	7.445
Pb	2807.550	+/-	60.968
Hg	1.000	+/-	7.014
Zn	31.547	+/-	10.124
Cu	29.987	+/-	17.312
Ni	1.000	+/-	29.682
Co	1.000	+/-	43.974
Fe	2638.908	+/-	138.278
Mn	1.000	+/-	76.571
Cr	1.000	+/-	26.623
V	1.000	+/-	37.823
Ti	1741.779	+/-	172.842
Ca	116727.297	+/-	1277.385
K	1499.801	+/-	164.299
Al	6143.331	+/-	856.421
P	1092.550	+/-	132.858
Si	33056.160	+/-	868.777
Cl	2018.944	+/-	58.325
S	13361.857	+/-	187.534
Mg	1.000	+/-	6636.873

mRFA -Ergebnisse

XL3t-69288

Reading No 9
Mode Mining
Time 2019-08-27 11:13
Duration 121.04
Units ppm
Sigma Value 2
Sequence Final
Flags 3mm
INV NR P276
OBJEKT TAFELGEMAELEN
MATERIAL HOLZ FASSUNG
ANALYSESTELLE P9 HAARE
MESSAUFBAU STATIV
FILTER m30lo30hi30li30
User Login Raquet

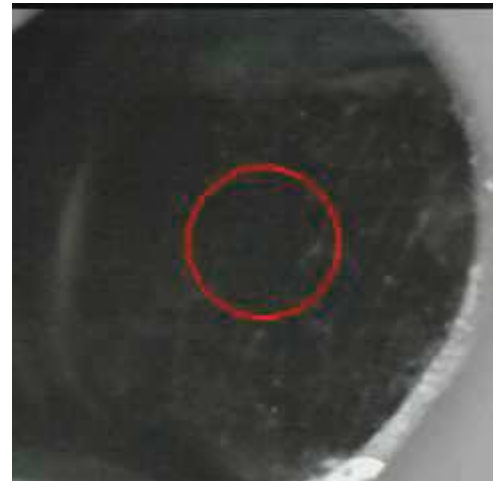


	ppm	+/-	Error
Ce	1.000	+/-	78.940
La	1.000	+/-	65.020
Ba	368.848	+/-	77.583
Sb	27.138	+/-	26.016
Sn	1.000	+/-	22.574
Cd	21.898	+/-	10.529
Ag	1.000	+/-	7.508
Bal	830455.063	+/-	1374.245
Nb	12.876	+/-	8.257
Zr	1.000	+/-	32.348
Y	1.000	+/-	7.006
Sr	117.724	+/-	6.159
Rb	1.000	+/-	14.844
Th	1.000	+/-	415.886
Bi	1.000	+/-	379.183
Au	1.000	+/-	16.877
As	500.105	+/-	67.155
Se	1.000	+/-	8.440
Pb	5033.667	+/-	93.680
Hg	227.776	+/-	15.252
Zn	33.488	+/-	12.056
Cu	27.335	+/-	17.096
Ni	1.000	+/-	28.736
Co	1.000	+/-	41.988
Fe	2456.096	+/-	134.258
Mn	1.000	+/-	82.473
Cr	36.824	+/-	24.908
V	1.000	+/-	32.740
Ti	1596.973	+/-	164.128
Ca	104317.711	+/-	1266.739
K	1510.517	+/-	161.481
Al	5956.443	+/-	843.053
P	993.298	+/-	132.606
Si	30507.543	+/-	859.261
Cl	1830.280	+/-	57.351
S	13968.338	+/-	209.387
Mg	1.000	+/-	7092.544

mRFA -Ergebnisse

XL3t-69288

Reading No 10
Mode Mining
Time 2019-08-27 11:16
Duration 122.18
Units ppm
Sigma Value 2
Sequence Final
Flags 3mm
INV NR P276
OBJEKT TAFELGEMAELEN
MATERIAL HOLZ FASSUNG
ANALYSESTELLE P10 HAARE
MESSAUFBAU STATIV
FILTER m30lo30hi30li30
User Login Raquet



	ppm	+/-	Error
Ce	1.000	+/-	80.647
La	1.000	+/-	66.870
Ba	1.000	+/-	71.843
Sb	1.000	+/-	37.074
Sn	1.000	+/-	28.163
Cd	21.338	+/-	11.018
Ag	1.000	+/-	10.194
Bal	798007.375	+/-	1648.784
Nb	9.668	+/-	6.756
Zr	1.000	+/-	26.591
Y	1.000	+/-	5.320
Sr	116.175	+/-	5.939
Rb	1.000	+/-	10.618
Th	1.000	+/-	331.714
Bi	1.000	+/-	321.994
Au	1.000	+/-	11.053
As	855.562	+/-	57.671
Se	1.000	+/-	7.078
Pb	2897.615	+/-	64.200
Hg	1.000	+/-	6.428
Zn	66.130	+/-	12.847
Cu	158.256	+/-	24.529
Ni	1.000	+/-	30.002
Co	1.000	+/-	44.246
Fe	2581.512	+/-	141.038
Mn	1.000	+/-	82.844
Cr	1.000	+/-	38.956
V	1.000	+/-	40.947
Ti	1912.460	+/-	185.787
Ca	126801.891	+/-	1405.234
K	1483.094	+/-	170.295
Al	7412.134	+/-	977.345
P	785.287	+/-	135.935
Si	40508.465	+/-	982.507
Cl	2112.381	+/-	61.226
S	14270.617	+/-	201.069
Mg	1.000	+/-	11537.874

mRFA -Ergebnisse

XL3t-69288

Reading No 11
Mode Mining
Time 2019-08-27 11:20
Duration 121.43
Units ppm
Sigma Value 2
Sequence Final
Flags 3mm
INV NR P276
OBJEKT TAFELGEMAELEN
MATERIAL HOLZ FASSUNG
ANALYSESTELLE P11 INSCRIFT
MESSAUFBAU STATIV
FILTER m30lo30hi30li30
User Login Raquet



	ppm	+/-	Error
Ce	1.000	+/-	111.611
La	1.000	+/-	111.259
Ba	1.000	+/-	133.629
Sb	39.529	+/-	34.952
Sn	30.425	+/-	22.392
Cd	25.427	+/-	13.832
Ag	1.000	+/-	8.386
Bal	878238.813	+/-	1189.232
Nb	26.543	+/-	19.347
Zr	1.000	+/-	67.968
Y	1.000	+/-	16.572
Sr	87.661	+/-	6.846
Rb	1.000	+/-	34.547
Th	1.000	+/-	932.507
Bi	1.000	+/-	819.815
Au	1.000	+/-	26.445
As	4398.269	+/-	170.120
Se	1.000	+/-	19.123
Pb	20541.971	+/-	386.000
Hg	1.000	+/-	14.628
Zn	1.000	+/-	28.666
Cu	32268.506	+/-	575.669
Ni	1.000	+/-	33.993
Co	1.000	+/-	30.784
Fe	199.687	+/-	59.843
Mn	1.000	+/-	72.137
Cr	1.000	+/-	24.972
V	1.000	+/-	19.337
Ti	1.000	+/-	91.805
Ca	9194.574	+/-	239.806
K	562.636	+/-	121.107
Al	1404.253	+/-	603.397
P	2310.072	+/-	158.160
Si	10449.884	+/-	520.897
Cl	3063.633	+/-	83.007
S	25459.650	+/-	456.800
Mg	11698.480	+/-	7513.841

mRFA -Ergebnisse

XL3t-69288

Reading No 12
Mode Mining
Time 2019-08-27 11:25
Duration 120.03
Units ppm
Sigma Value 2
Sequence Final
Flags 3mm
INV NR P276
OBJEKT TAFELGEMAELEN
MATERIAL HOLZ FASSUNG
ANALYSESTELLE P12 INSCRIFT
MESSAUFBAU STATIV
FILTER m30lo30hi30li30
User Login Raquet



	ppm	+/-	Error
Ce	1.000	+/-	105.502
La	1.000	+/-	85.996
Ba	1.000	+/-	91.208
Sb	1.000	+/-	31.065
Sn	446.604	+/-	36.790
Cd	13.993	+/-	12.645
Ag	1.000	+/-	6.437
Bal	896496.063	+/-	996.868
Nb	18.996	+/-	17.761
Zr	1.000	+/-	62.778
Y	1.000	+/-	15.356
Sr	61.067	+/-	6.601
Rb	1.000	+/-	32.102
Th	1.000	+/-	863.276
Bi	1.000	+/-	786.112
Au	1.000	+/-	31.846
As	4307.026	+/-	159.709
Se	1.000	+/-	17.494
Pb	18344.209	+/-	344.920
Hg	349.876	+/-	28.267
Zn	1.000	+/-	32.595
Cu	26684.609	+/-	494.507
Ni	1.000	+/-	34.082
Co	1.000	+/-	29.538
Fe	126.343	+/-	56.729
Mn	1.000	+/-	72.806
Cr	1.000	+/-	22.868
V	1.000	+/-	18.534
Ti	1.000	+/-	90.491
Ca	7471.477	+/-	227.727
K	482.568	+/-	134.654
Al	1284.940	+/-	556.560
P	3929.498	+/-	180.542
Si	9734.880	+/-	497.810
Cl	2658.736	+/-	75.279
S	27589.070	+/-	499.676
Mg	1.000	+/-	6340.546

mRFA -Ergebnisse

XL3t-69288

Reading No 13
Mode Mining
Time 2019-08-27 11:35
Duration 121.21
Units ppm
Sigma Value 2
Sequence Final
Flags 3mm
INV NR P276
OBJEKT TAFELGEMAELEN
MATERIAL HOLZ FASSUNG
ANALYSESTELLE P13 INSCRIFT
MESSAUFBAU STATIV
FILTER m30lo30hi30li30
User Login Raquet



	ppm	+/-	Error
Ce	1.000	+/-	111.598
La	1.000	+/-	92.798
Ba	1.000	+/-	97.583
Sb	1.000	+/-	35.323
Sn	1.000	+/-	29.307
Cd	1.000	+/-	17.592
Ag	1.000	+/-	7.021
Bal	892021.625	+/-	1024.167
Nb	18.268	+/-	18.005
Zr	1.000	+/-	63.731
Y	1.000	+/-	15.473
Sr	89.176	+/-	6.672
Rb	1.000	+/-	39.207
Th	1.000	+/-	876.902
Bi	1.000	+/-	730.144
Au	1.000	+/-	22.741
As	4118.197	+/-	159.218
Se	1.000	+/-	18.319
Pb	18599.881	+/-	342.858
Hg	1.000	+/-	13.942
Zn	1.000	+/-	28.328
Cu	32864.492	+/-	567.102
Ni	1.000	+/-	33.916
Co	1.000	+/-	36.771
Fe	119.728	+/-	55.697
Mn	1.000	+/-	79.497
Cr	1.000	+/-	22.933
V	1.000	+/-	17.347
Ti	1.000	+/-	125.133
Ca	9423.024	+/-	234.089
K	645.427	+/-	116.515
Al	1584.281	+/-	587.048
P	2099.104	+/-	154.094
Si	9811.860	+/-	500.188
Cl	2871.034	+/-	78.175
S	25733.943	+/-	445.413
Mg	1.000	+/-	6521.101