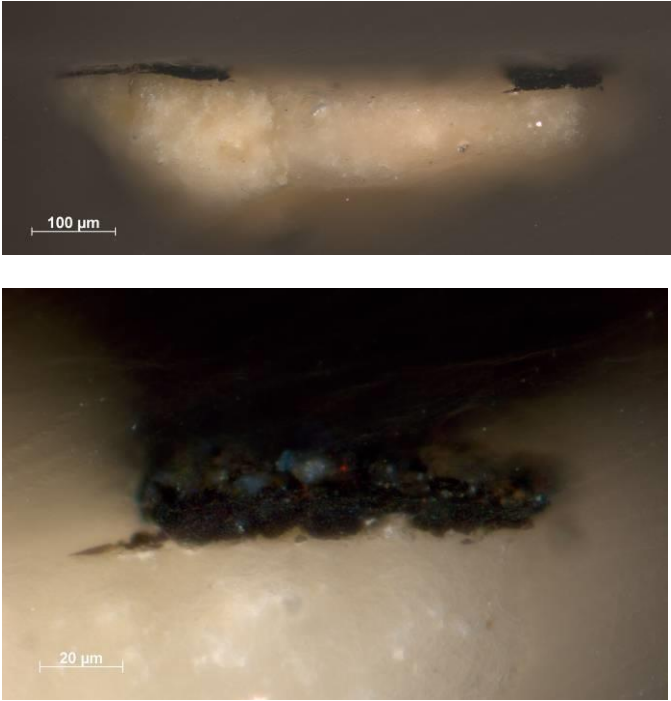



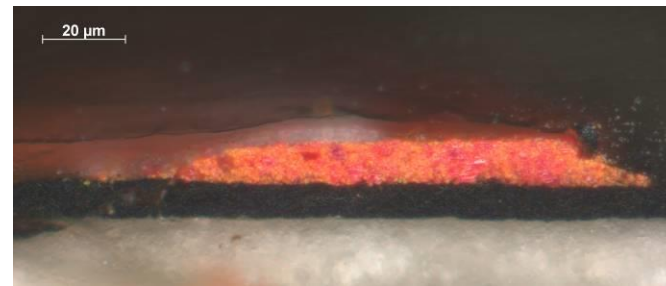
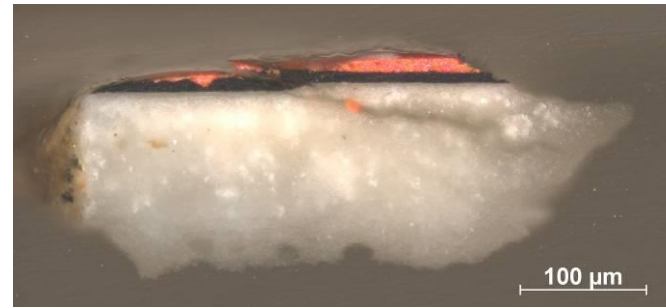
Table I – Lucas Cranach the Elder, *Portrait of a Young Lady*, (about 1525) NG 291

Samples taken 2nd February 1995

Sample No.	Location & Description	Photomicrograph of paint cross-section Stratigraphy	Photomicrograph of paint cross-section in UV SEM/EDX results/Comments
1	Black paint of background, sample from lower edge	 <ul style="list-style-type: none"> • Black paint layer. • Chalk ground (confirmed by EDX). 	

2a

Bright red highlight of
dress, bottom edge

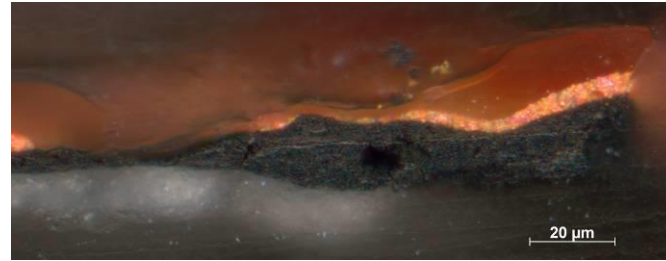


- Perhaps a red lake glaze.
- Bright red layer of vermillion.
- Black paint layer.
- Chalk ground



2b

Bright red highlight of
dress, bottom edge

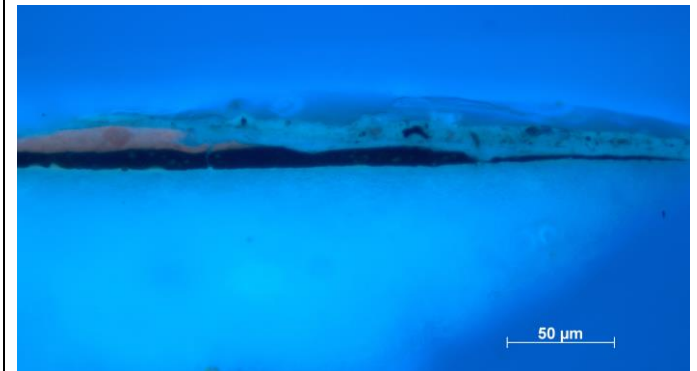
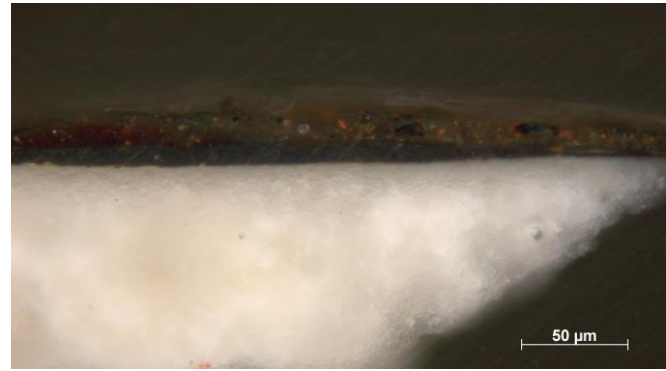
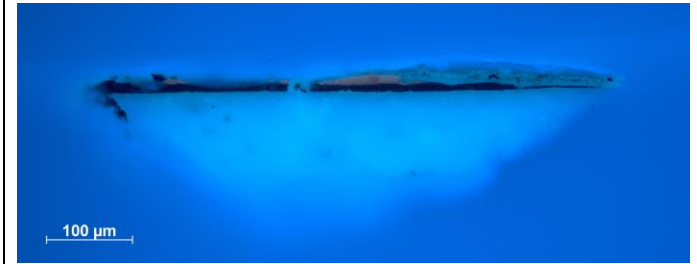
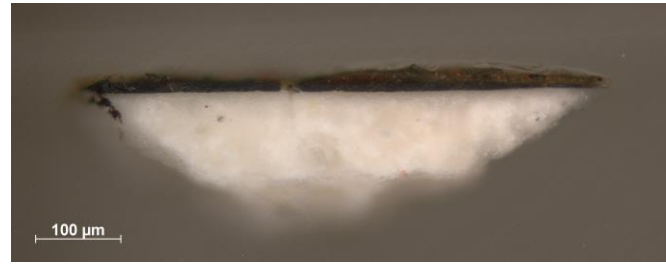


- Red lake glaze.
- Bright red layer of vermillion.
- Black paint layer.
- Chalk ground



3

Dark brownish-red shadow
of dress, bottom edge



- Overpaint.
- Varnish.
- Red lake glaze
- Black paint layer.
- Chalk ground